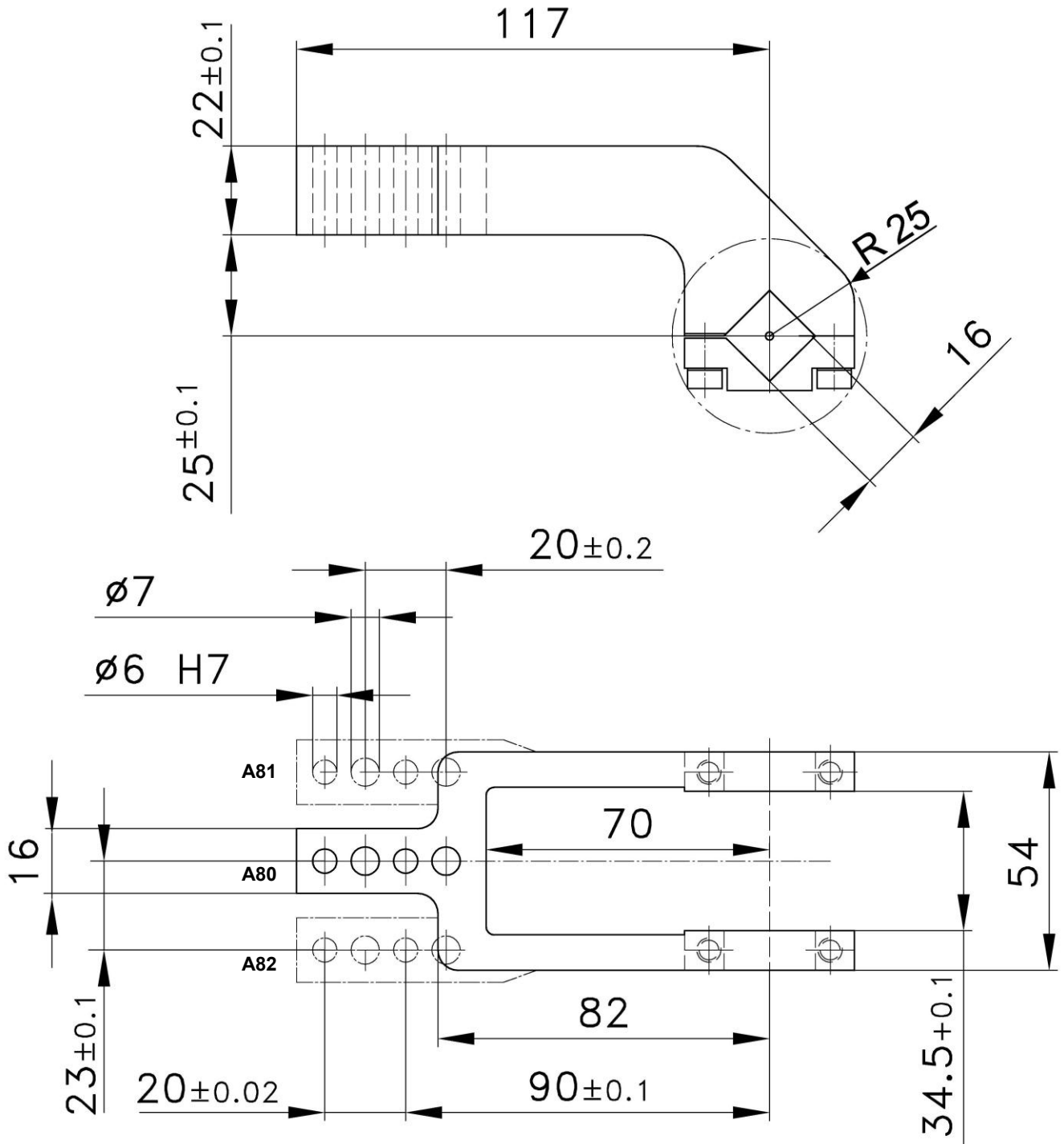


Clamp arms

for Clamps size 40 with an offset of 25 mm

A80, A81, A82



Ordering example clamp arm complete:

278310: Clamp arm complete. A80 size 40

Ordering example for a complete clamp:

V 40 BR2 A80 T12

V 40 BR2: Type
 A80: Clamp arm version
 T12: Sensing system

Clamp size	Clamp arm version A80 order no.	Clamp arm version A81 order no.	Clamp arm version A82 order no.	Weight ~ (kg)
40	278310	279501	279503	0.6