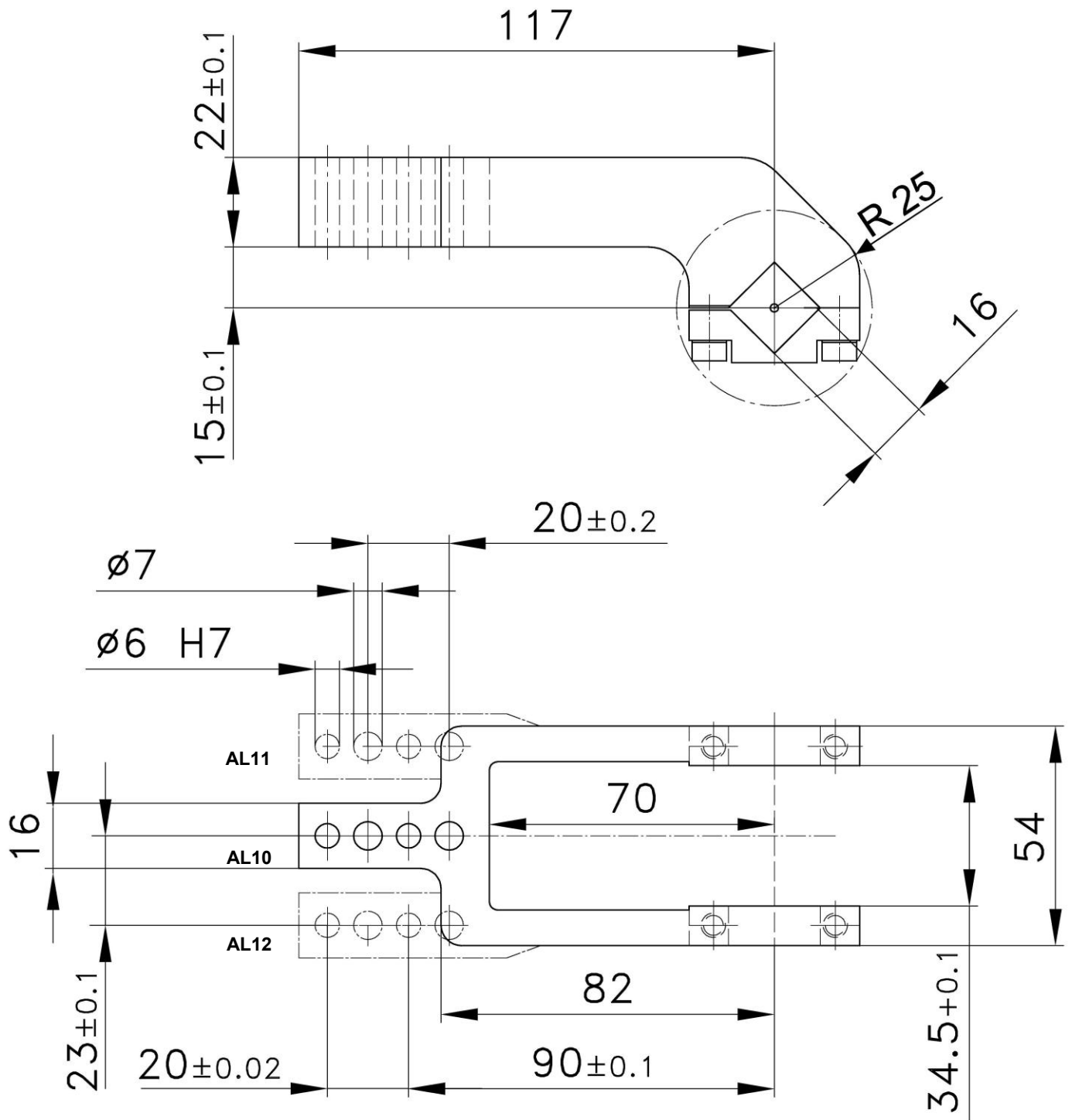


Clamp arm

aluminum version

for LW Clamps size 40 with an offset of 15 mm

AL10, 11, 12



Ordering example clamp arm complete:

286082: Clamp arm complete AL10 size 40 LW

Ordering example for a complete clamp:

V 40 LW AL10 T12

V 40 LW:

Type

AL10: Clamp arm version

T12: Sensing system

Attention!

Aluminum clamp arms may only be loaded with the clamping moment! (see data sheet V/V2 40 LW)

Clamp size	Clamp arm version AL10 order no.	Clamp arm version AL11 (LW2... AL12) order no.	Clamp arm version AL12 (LW2... AL11) order no.	Material	Weight ~ (kg)
40	286082	289808	289809	Al	0.24

