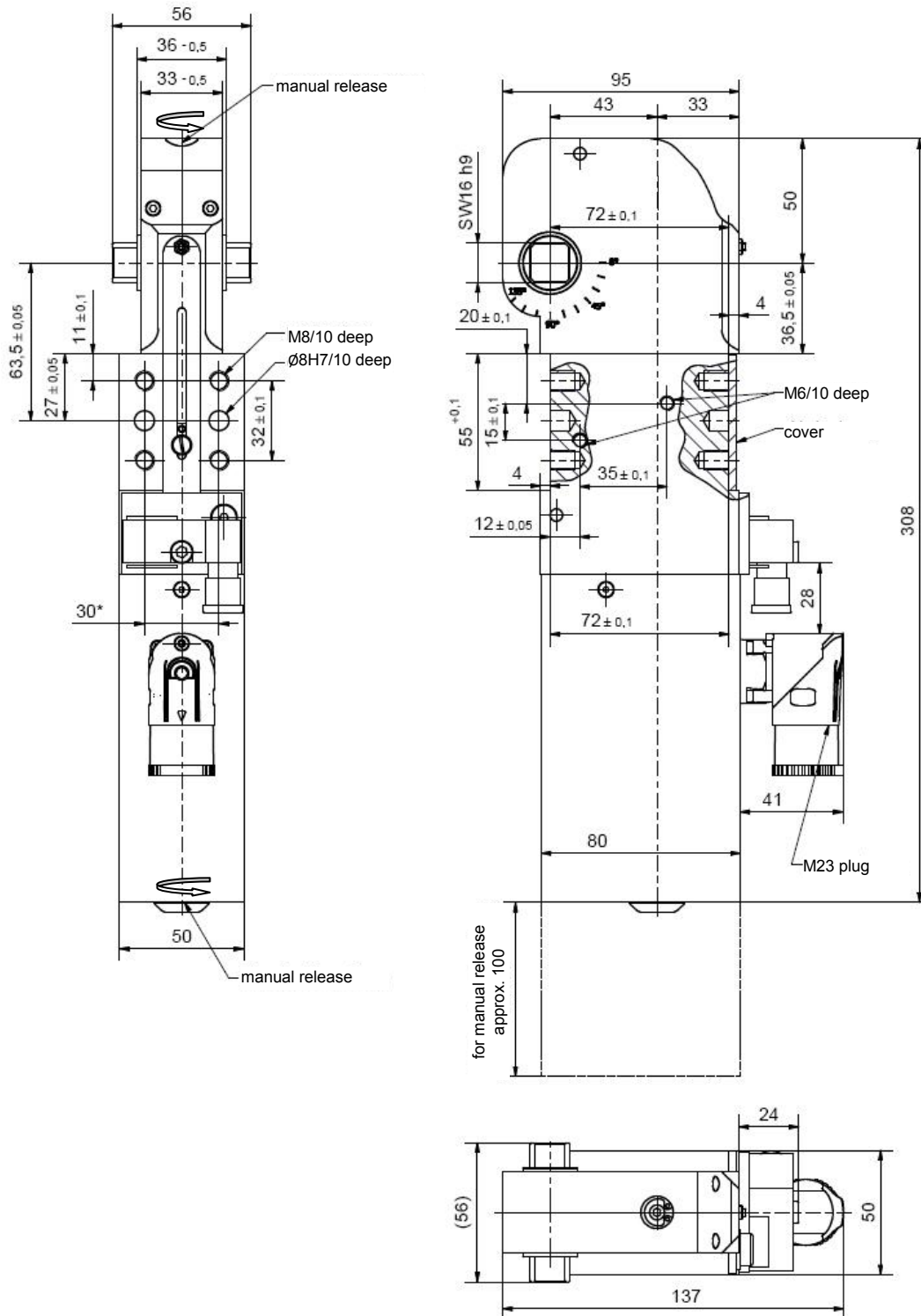


Electric Clamp

24 V, totally enclosed, self-locking type,
stepless adjustable opening angle, with electric motor
connection compatible to size 50/63

EKU 40.5 A0350



Ordering example:

EKU 40.5 A0350 T12 135°

| | |
|-----------|-------------------|
| EKU 40.5: | Type |
| A0350: | Without clamp arm |
| T12: | Sensing system |
| 135°: | Opening angle |

Ordering example Tünkens sensing system:

...T12 Inductive sensor 24 V, 1 output with integrated LED's

Attention:

Only available with control module (see separate list).

Standard opening angles:

Stepless adjustable in the range of 25° to 135°

More clamp arm versions on request.

*Tolerance for dowel holes ± 0.02 , for threaded holes ± 0.1 .

Technical data:

| | |
|----------------------------|--------|
| Clamping moment: | 120 Nm |
| Holding torque max.: | 200 Nm |
| According to piston Ø: | 40 mm |
| Weight kg: | 2.95 |
| Nominal voltage Y (V): | 24 |
| Protection type DIN 40050: | IP 54 |
| Cycle time (sec): | 1.0 |
| Off-time min. (sec): | 3.5 |