

Pos.	Part no.	Quantity	Description	Type	Flag ¹
1_10	365428	1	side plate	HD 100 AS 360x270x25	
1_20	365644	1	side plate	HD 100 AS 360x270x25	
1_30	365429	1	base plate	HD 100 AS 360x120x25	
1_60	367368	4	distance ring	HD 100 AS D70xD55x19	
1_70	365455	2	strap	HD 100 AS	R
1_80	365436	1	fork	HD 100 AS 68x58x40	
1_90	365456	2	strap	HD 100 AS 131x46x16	R
1_100	365475	1	bolt	HD 100 AS D25x100	R
1_110	365476	2	bolt	HD 100 AS D25x48.2	R
1_120	209910	2	bolt	PFS 200 D25x32	R
1_130	231981	1	supporting roller complete	KS 80 KS 100 PFS 200	R
1_135	444742	1	supporting roller complete	HD 100 AS	R
1_140	365539	1	end stop	HD 100 AS	R
1_150	267432	2	stop plate	KS 125.2	R
1_160	365528	2	end stop holder	HD 100 AS	
1_170	225135	4	needle sleeve complete	KS 125	R
1_180	211529	4	axial needle roller	AXK 5070 D70xD50x3	R
1_190	211530	8	axial washer	AS 5070 D50xD70x1	R
1_200	365464	1	cylinder head	HD 100 AS	
1_210	365462	1	cylinder pipe	HD 100 AS	R
1_220	365457	1	cylinder bottom	HD 100 AS 162x110x19	
1_230	365465	1	piston	HD 100 AS	
1_240	365440	1	piston rod	HD 100 AS	
1_260	212563	1	wiper seal	PU5 D30-D38x7x4	RD
1_270	212588	1	rod seal	NBR 80 D30xD39x2.8	RD
1_280	220669	1	guide band	FB3 5.60 x 2.50 x 310 -05T	R
1_290	212620	1	glide seal set	2G0 D100x87.5x5.6-06X	RD
1_300	201905	2	o-ring	100.00 x 3.00	RD
1_310	201702	1	o-ring	20.00 x 3.00	RD
1_320	201649	4	o-ring	5.00 x 1.50	RD
1_330	211460	5	seal plug	Expander MB 700-050	RD
1_340	295816	2	screw plug	G1/4	RD
1_350	200260	8	cap screw	DIN 912-M10x35-10.9	
1_360	227939	4	cap screw	DIN 912-M8x105-8.8-vz	
1_370	200221	4	cap screw	DIN 912-M8x25-10.9	
1_380	200430	4	cap screw	DIN 6912-M8x18-8.8	
1_390	200149	2	cap screw	DIN 912-M5x25-10.9	
1_420	222807	4	dowel pin	DIN 7979-D-8m6x45-St	
1_430	216360	4	dowel pin	DIN 7979-D-8m6x24-St	
1_450	200618	5	set screw	DIN 915-M5x10-45H	
1_460	221196	1	retaining ring	DIN 471-AS25x2.00-F.St	
1_470	200978	8	lock washer	S 10-F.St	
1_480	200977	12	lock washer	S 8-F.St	
1_490	200975	2	lock washer	S 5-F.St	

Spare Parts

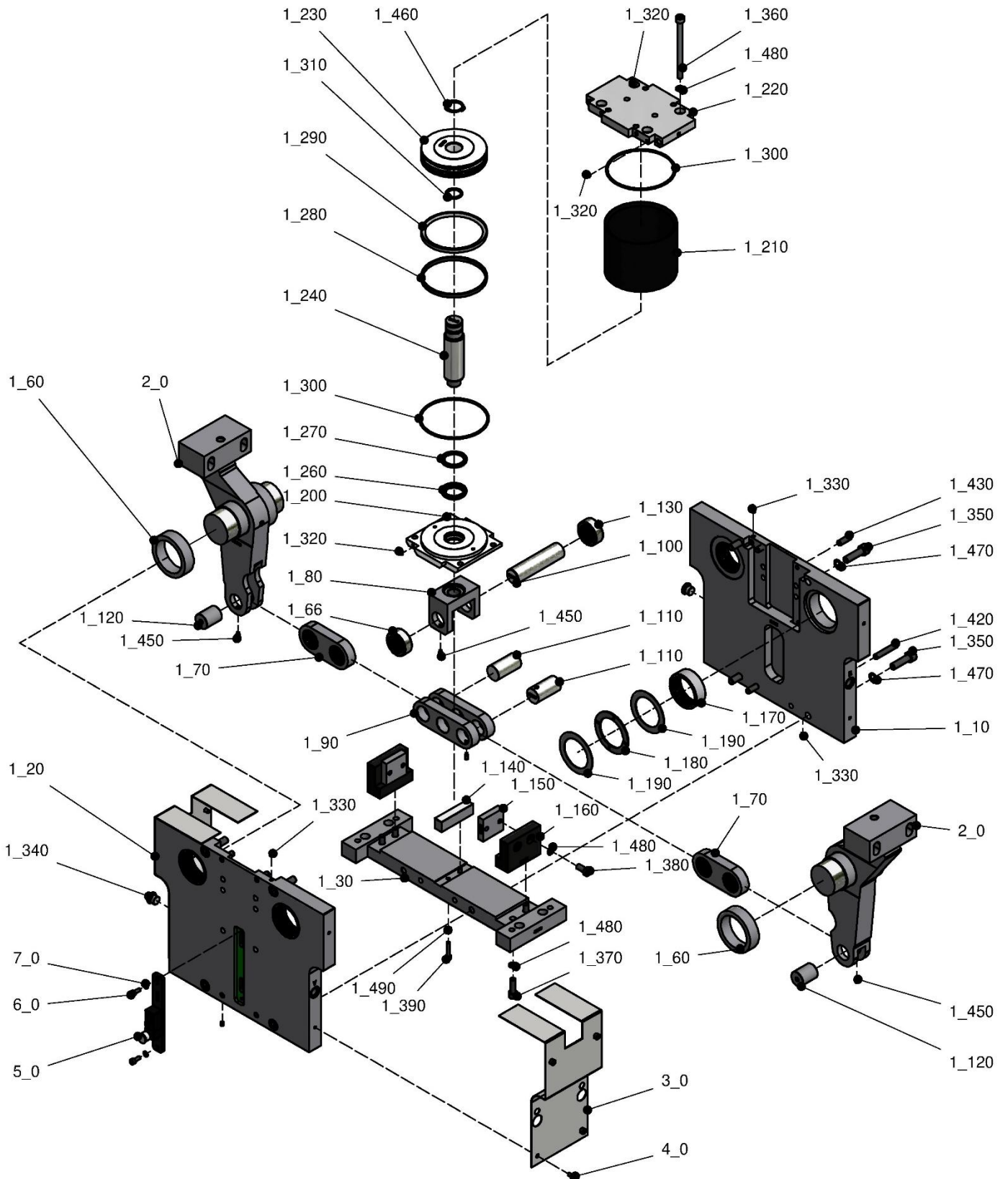
page -2-

Pos.	Part no.	Quantity	Description	Type	Flag ¹
2_0	1319649	2	clamp arm complete	HD 100 AS A10-200	
	1319648	2	clamp arm complete	HD 100 AS A10-240	
	1319647	2	clamp arm complete	HD 100 AS A10-270	
	1319644	2	clamp arm complete	HD 100 AS A20-200	
	1319639	2	clamp arm complete	HD 100 AS A20-240	
3_0	365684	2	cover sheet	HD 100 AS A10/A20-200	
	1194781	2	cover sheet	HD 100 AS A10/A20-240	
	1194782	2	cover sheet	HD 100 AS A10-270	
4_0	200142	8	cap screw	DIN 912-M5x8-10.9	
6_0	200144	2	cap screw	DIN 912-M5x12-10.9	
7_0	200975	2	lock washer	S 5-F.St	

spare parts sets / accessories

Pos.	Part no.	Quantity	Description	Type	
	1351481	1	repair kit	HD 100 AS	
	1351478	1	seal kit	HD 100 AS	
5_0	365778	1	limit switch set complete	HD 100 AS T12 P+F	

¹ R = included with repair kit, D = included with seal kit



Subject to technical modifications.

04.05.2020