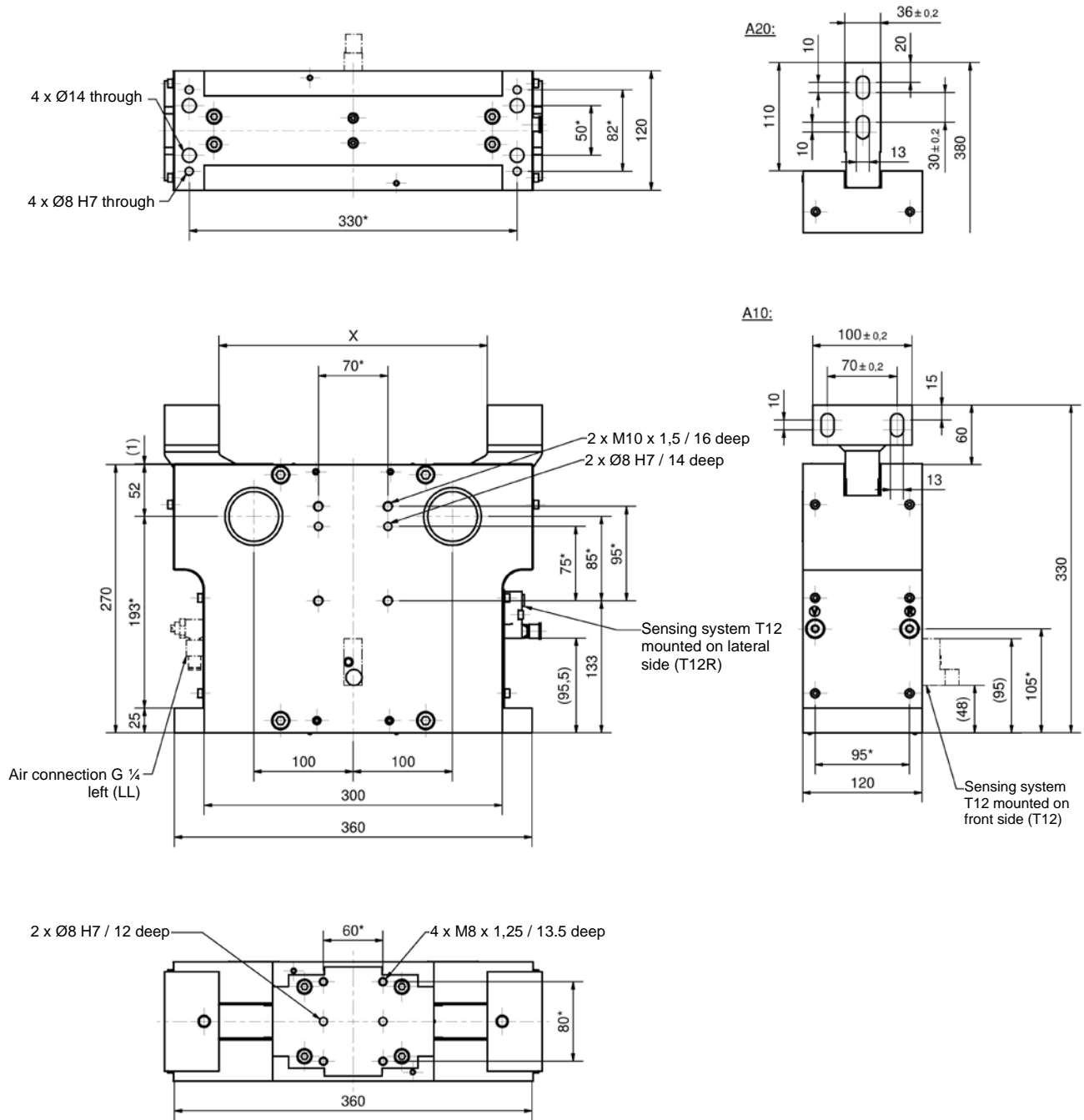


# Heavy Duty Clamp

double arm version, knee lever locked end position

# HD 100 AS



**Ordering example:**

HD 100 AS A10-200 T12 LR SB

- HD: Type
- 100: Piston Ø
- AS: Double arm version
- A10-200: Clamp arm version (standard)
- T12: Sensing system mounted on front side (T12R = lateral side)
- LR: Air connection right (LL = left)
- SB: **Optional:** Protection plate

**Ordering example TÜNKERS sensing systems:**

- ...T12 Inductive sensor 24 V, mounted on front side  
1 output with integrated LED's
- ...T12R Inductive sensor 24 V, mounted on lateral side  
1 output with integrated LED's

**Opening angles (2 x):**  
12°

**Clamp arm versions:**

- A10-200: 200 mm clamping range "X" (standard)
- A10-240: 240 mm clamping range "X"
- A10-270: 270 mm clamping range "X"
- A20-200: 200 mm clamping range "X"
- A20-240: 240 mm clamping range "X"

\* Tolerance for dowel holes ± 0.02, for threaded holes ± 0.1.

**Attention!**

External throttle check valves must be provided on assembly. They are not included in the scope of delivery!

Type	Clamping force at 5 bar (N)	Working pressure in oil-free air (bar)	Maximum pressure in oil-free air (bar)	Connection (G)	Opening and Closing time (s)	Weight ~ (kg)
HD 100 AS	20000	5	6	1/4	1	55.0