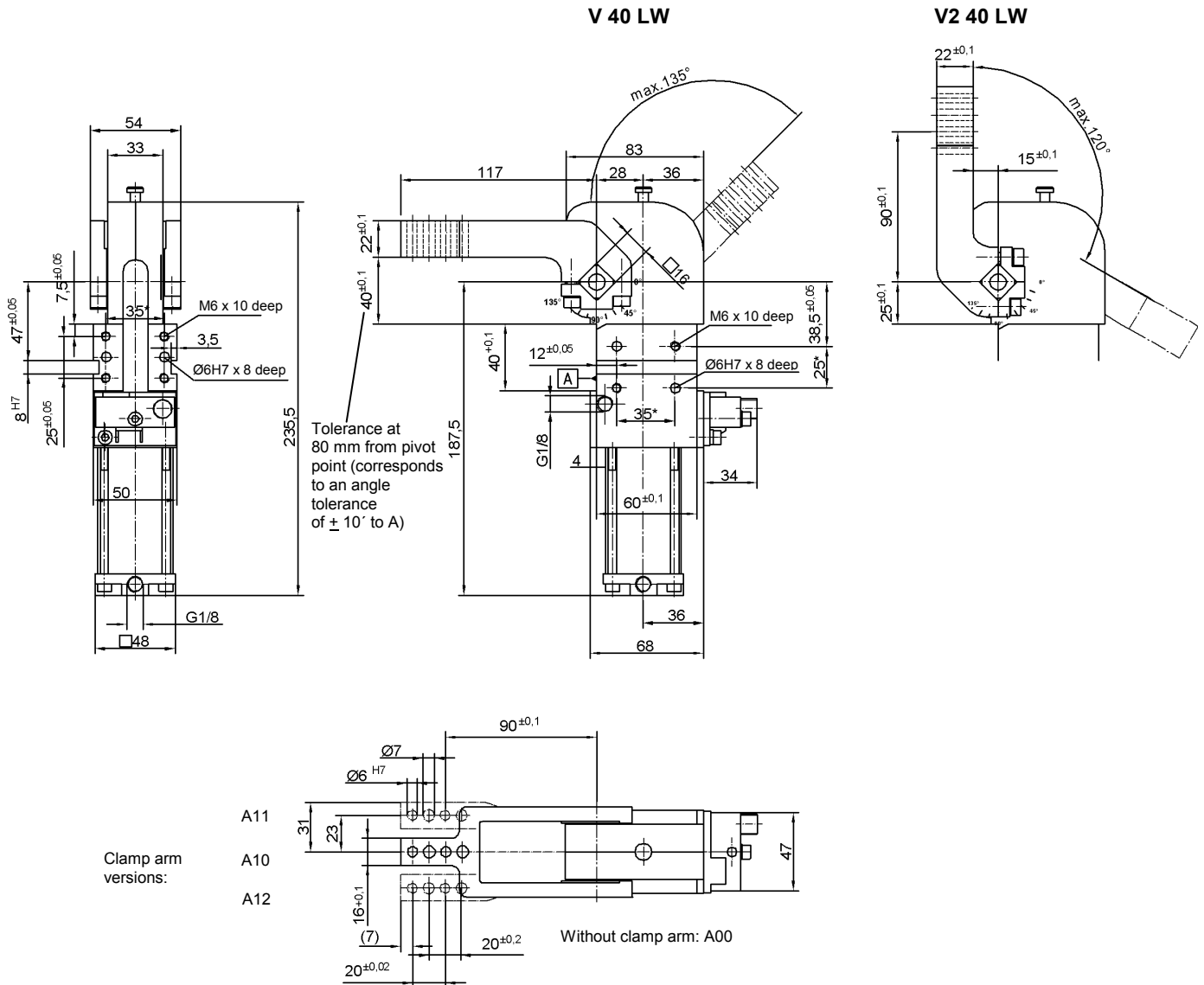


Vario Clamp

Lightweight design, self-locking type, stepless adjustable opening angle, clamp arm in steel design as standard

V/V2 40 LW

10°-135°



Ordering example:

V 40 LW A10 T12 135°

V 40 LW:

- | | |
|-------|------------------------------------|
| Type | Type |
| A10: | Clamp arm version steel (standard) |
| AL10: | Clamp arm version aluminum |
| T12: | Sensing system |
| 135°: | Opening angle |

Ordering example TÜNKERS sensing systems:

- | | |
|--------|---|
| ...T00 | Without sensing |
| ...T12 | Inductive sensor 24 V, 1 output with integrated LED's |

Attention!

Aluminum clamp arms may only be loaded with the clamping moment!

*Tolerance for dowel holes ± 0.02 , for threaded holes ± 0.1 .

Medium: Air, max. 6 bar, operation permitted with oil-free air.

Attention!

External throttle check valves must be provided on assembly.
They are not included in the scope of delivery!

Type	Weight (kg)
V/V2 40 LW A00	1.34
Clamp arms:	
A10 Steel clamp arm incl. flange and fixing material	0.50
AL10 Aluminum clamp arm incl. flange and fixing material	0.24
A50 Steel clamp arm incl. flange and fixing material	0.65
AL50 Aluminum clamp arm incl. flange and fixing material	0.28
Flange:	
Alu 2 pieces complete	0.04
steel 2 pieces complete	0.08

Type	Holding torque max.	Clamping moment at 5 bar	Piston Ø	Weight ~ (kg)
V/V2 40 LW	380 Nm	120 Nm	40	1.84

