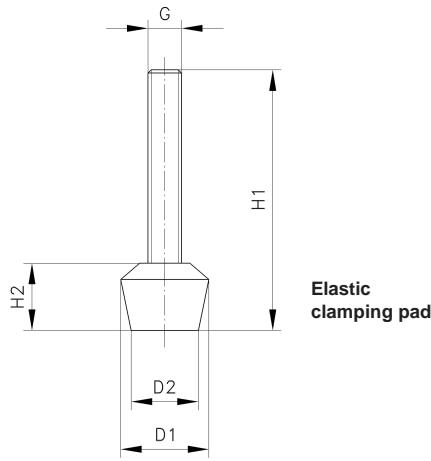
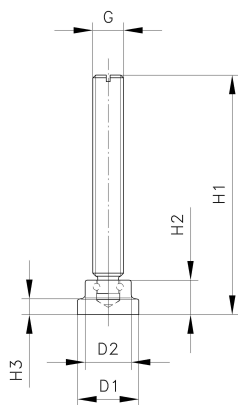


Pressure Screws

compatible with product series PKS.. /K... 1

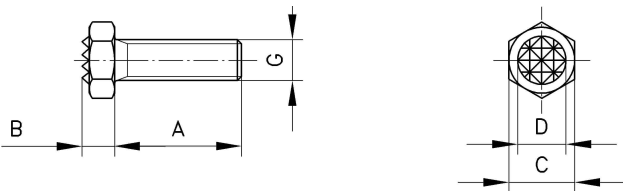


Elastic clamping pad



Steel pivot head

Hard metal carbide insert

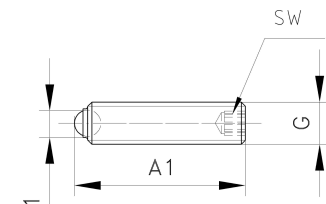


Type	Ident No.	Size (G)	H1	H2	D1	D2	Weight (g)
T2-AS 6 x 35	221658	M6 x 35	45	13	16	12	12
T2-AS 8 x 35	221661	M8 x 35	48	16	21	16	25
T2-AS 8 x 45	250078	M8 x 45	58	16	21	16	28
T2-AS 8 x 50	221659	M8 x 50	63	16	21	16	30
T2-AS 8 x 65	221660	M8 x 65	78	16	21	16	35

Type	Ident No.	Size (G)	Mutter f. T-Nute	H1	H2	D1	D2	Weight (g)
T2-AG 6 x 50	237130	M6 x 50	-	52	13	16	12	20
T2-AG 8 x 75	237131	M8 x 75	-	48	16	21	16	47
T2-AG 8 x 75	237134	M8 x 75	M8 x 10	58	16	21	16	62

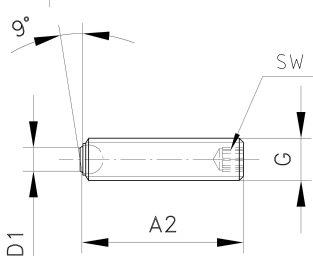
Type	Ident No.	Size (G)	A	B	C	D	Weight (g)
TRS-M6	261742	M6	25	5	10	7,9	12
TRS-M8	261743	M8	25	6,4	13	9,5	15

Steel ball



Type Form A	Ident No.	Size (G)	A1	D1	SW	Weight (g)
TVK-M6	261744	M6	16,8	3,2	3	5
TVK-M6	261745	M6	25,8	3,2	3	5
TVK-M8	261746	M8	21,2	4,5	4	6
TVK-M8	261747	M8	31,2	4,5	4	6

Steel ball



Type Form B	Ident No.	Size (G)	A2	D1	SW	Weight (g)
TAK-M6	261748	M6	16	3,2	3	5
TAK-M6	261749	M6	25	3,2	3	5
TAK-M8	261750	M8	20	4,5	4	6
TAK-M8	261751	M8	30	4,5	4	6

With clamp arm version "A18"

With clamp arm version "A17"

With clamp arm version "A19"

Assembly example

