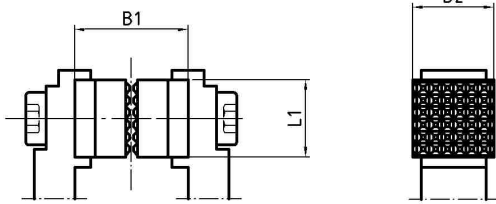
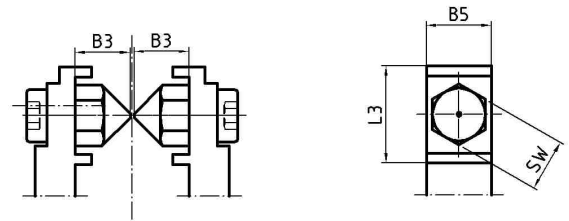


# Accessories Gripping Dies with application examples

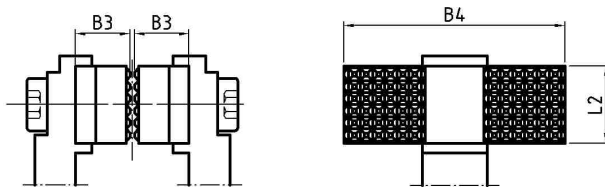
1. Steel gripping die single „SB“



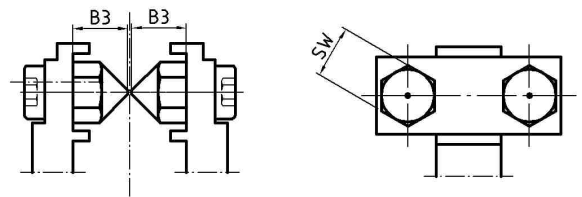
5. Centering tip single „ZB“



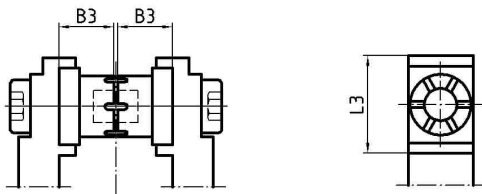
2. Steel gripping die double „SBD“



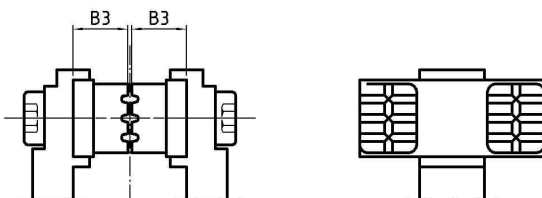
6. Centering tip double „ZBD“



3. Neoprene® gripping die single „NB“



4. Neoprene® gripping die double „NBD“



## Ordering example:

NBD M6-15

NBD: Type  
M6: Thread size  
15: Clamping range 0.0 – 1.5 mm

## Clamping ranges / Sheet thicknesses to be clamped:

0.0 – 1.5 mm = 15  
1.5 – 3.0 mm = 20  
3.0 – 4.0 mm = 40

Size	L1	L2	L3	B1	B2	B3	B4	B5	Weight (g)
M6 x 35	19	19	24	28	20	14,5	54	16	6
M8 x 35	24	24	30	35	25	18,2	68	20	8