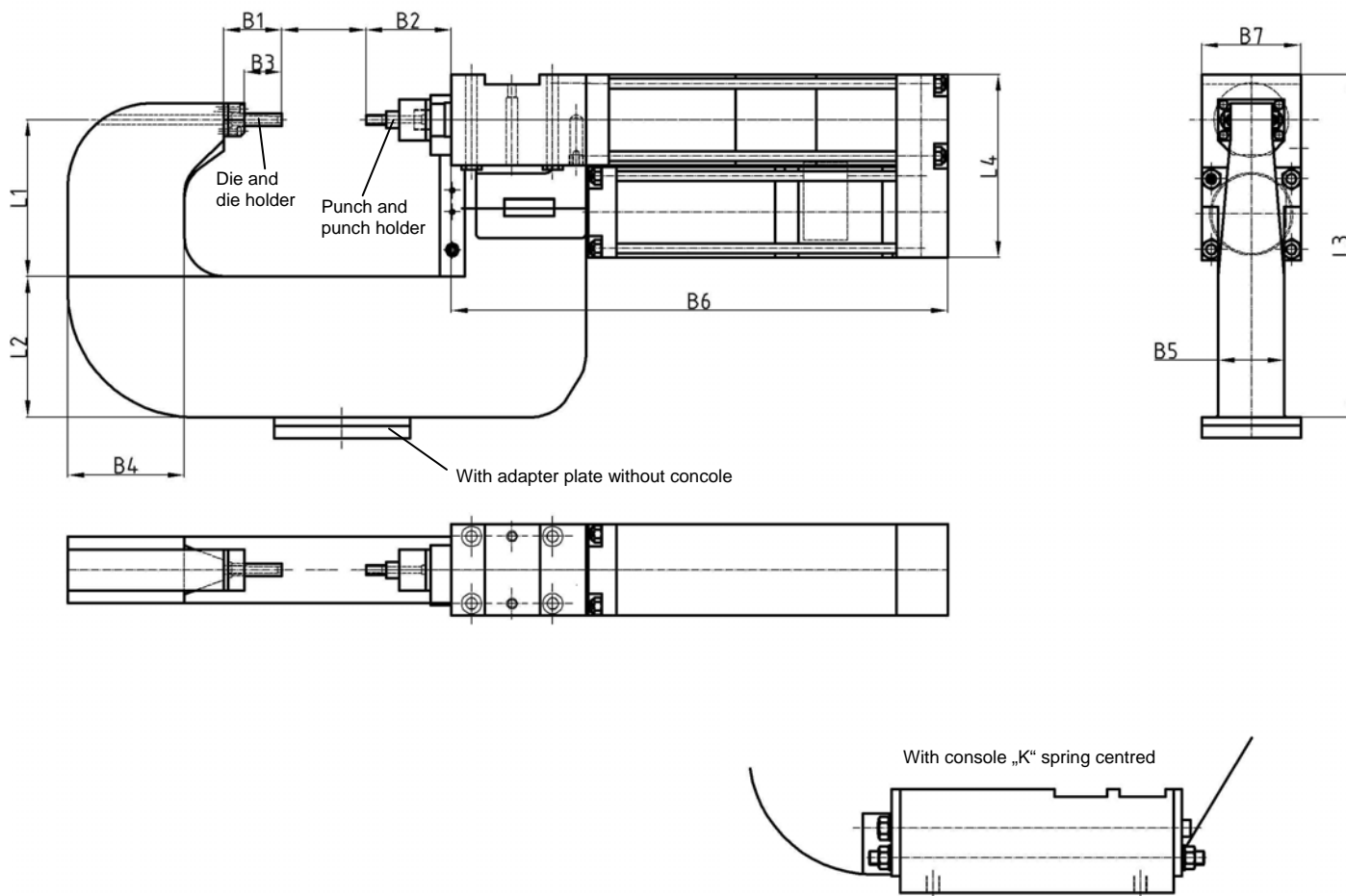


C-frame system

with HydroAir-cylinder, for punching, stamping, joining

CBHA



Ordering example:

CBHA 15 50 100 K F

CBHA 15: Force (kN)
50: Reach (L1)
100: Stroke
K: With console spring centred
F: Process (e.g. joining)

Attention: These dimensions are standard gauges, which are adjusted when necessary.

*Punch and die will be designed for situations of application.

For more examples of using C-frame systems see data sheet "CBHA-series".

*Tolerance for dowel holes $\pm 0,02$, for threaded holes $\pm 0,1$.

Medium: Air, max. 6 bar, operation permitted with oil-free air.

Type	Cylinder force ~ kN	Cylinder ø	Stroke	Power stroke mm	L1	L2	L3	L4	B1	B2	B3	B4	B5	B6	B7
CBHA 15	15	50	50	6	50	100	257	142	36	150	15	100	50	449+stroke	70
			100		100	150	357					150		414+stroke	
			150		200	300	607					300		464+stroke	
CBHA 30	30	63	50	6	50	100	280	172	36			100	60	527+stroke	85
			100		100	150	380					150		492+stroke	
			150		200	300	630					300		492+stroke	
CBHA 60	60	80	50	6	50	100	317	222	67			100	80	559+stroke	110
			100		100	150	417					150		518+stroke	
			150		200	300	667					300		507+stroke	
CBHA 110	110	100	50	6	50	100	357	274	67			100	120	626+stroke	135
			100		100	150	457					150		594+stroke	
			150		200	300	707					300		562+stroke	