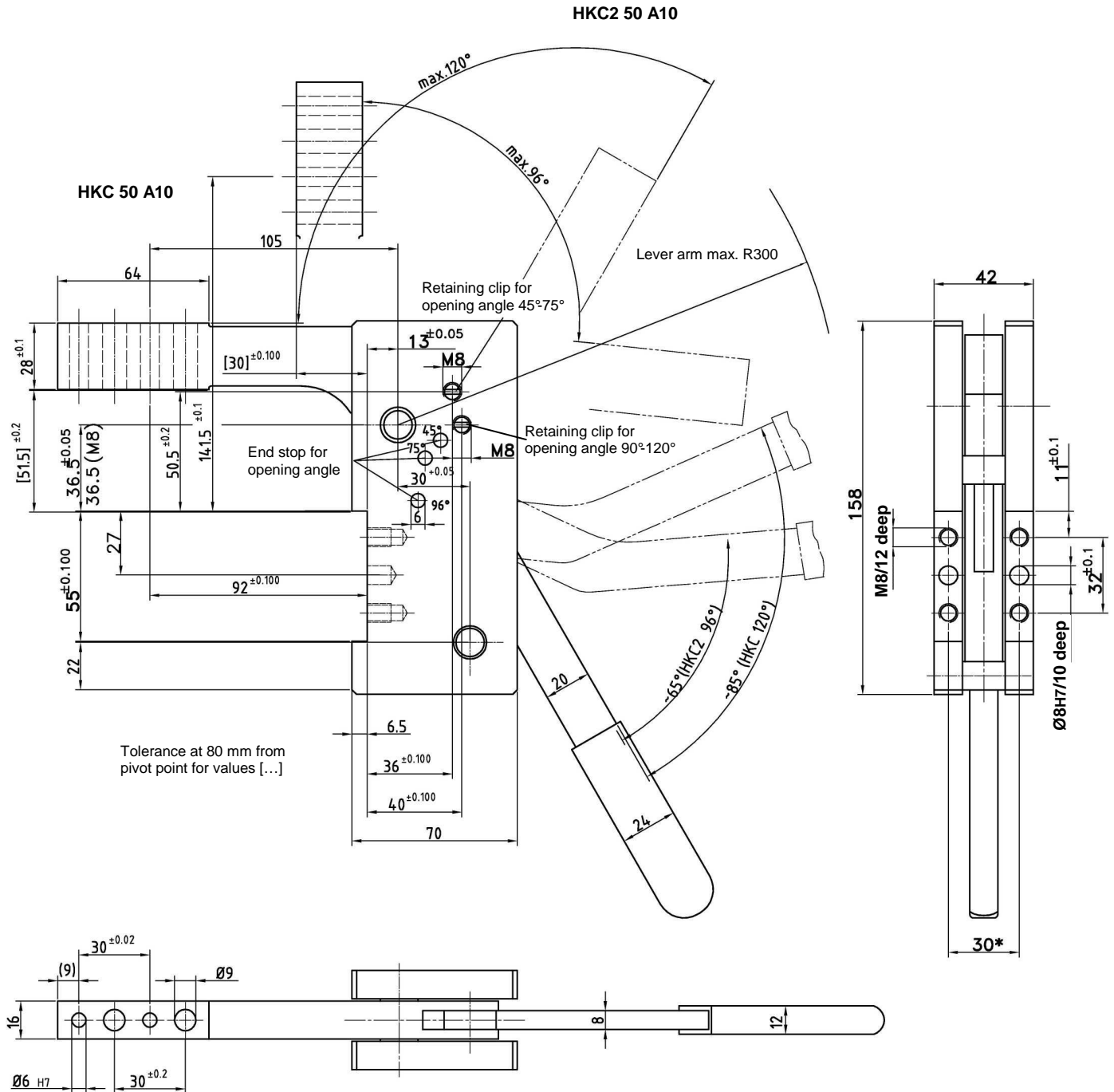


Manual Clamp

Front mounting compatible to K 50/K 63, self-locking type

HKC 50 A10



Option:

Light weight clamps in aluminium HKCA 50/HKCA2 50

Standard opening angles:

HKC 50: 45°, 75°, 120°

HKC2 50: 45°, 75°, 96°

Type	Clamping moment	Holding torque	Weight ~ (kg)	Weight for aluminium version HKCA... ~ (kg)
HKC/HKC2 50 A10	160 Nm	320 Nm	3.2	1.6