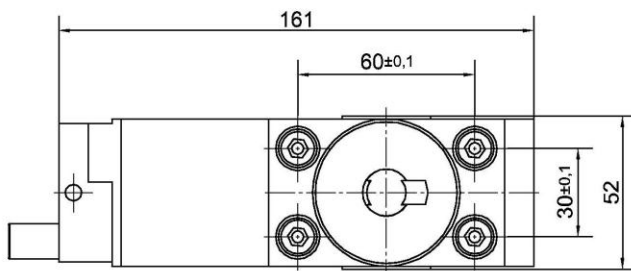
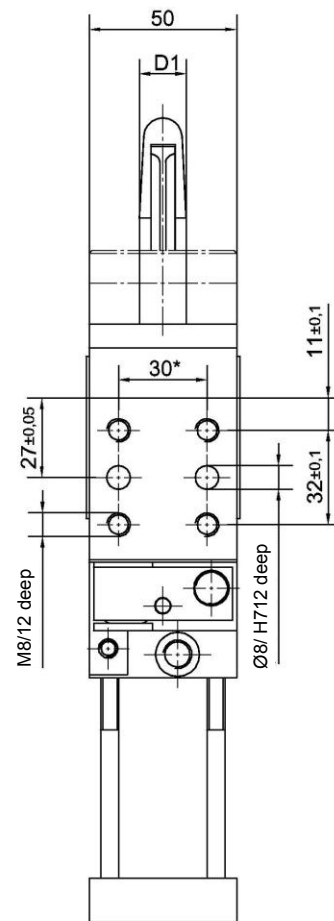
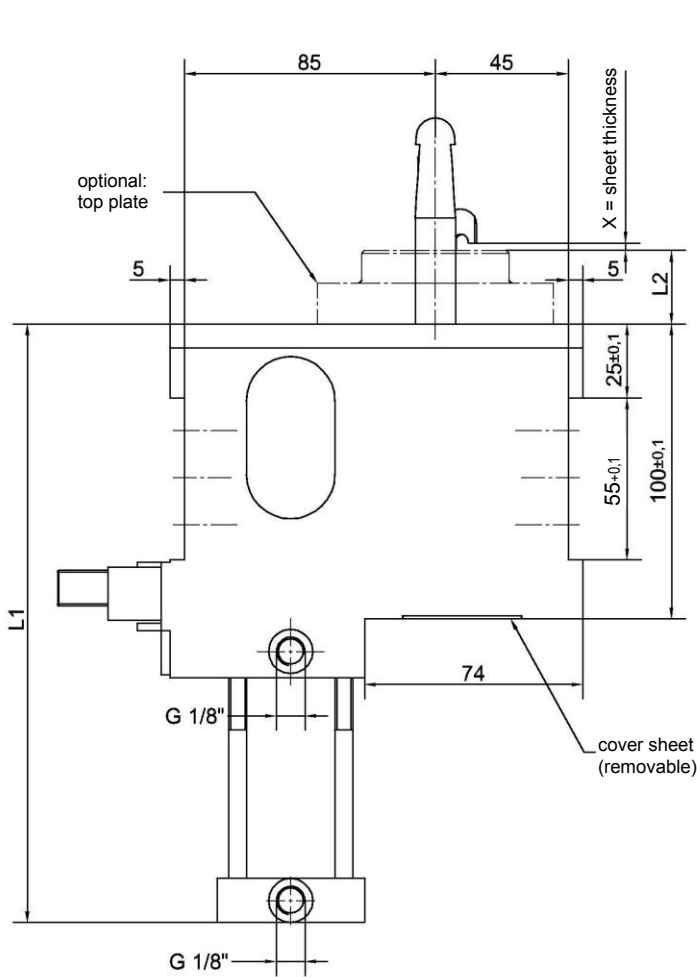


Underbody Clamp

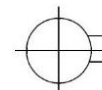
enclosed version, with centering pin for seat $\varnothing 20 - 40$ mm,
with moving device to protect the mechanics

K 32.1 UZ

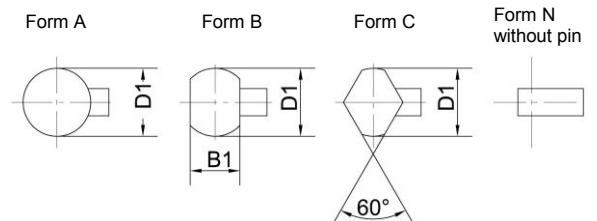


Hook position

1
standard position



Pin forms



Example for request:

K 32.1 UZ 1A30_45 T12 X=4.2

K 32.1 UZ:
1: Type
A: Hook position
30: Pin form
45: Pin diameter D1
Height L2
T12: Sensing system
X=4.2: Sheet thickness X

Please send your request example to our design office.

After checking your request you will receive an individual article number for the requested Underbody Clamp.

Attention!

External throttle check valves must be provided on assembly. They are not included in the scope of delivery!

Ordering example Tünkers sensing systems:

...T00 Without sensing system
...T12 Inductive sensor 24 V, 1 output with integrated LEDs

Medium: Air, max. 6 bar, operation permitted with oil-free air.

*Tolerance for dowel holes ± 0.02 , for threaded holes ± 0.1 .

Type	Holding force max.	Clamping force at 6 bar	Weight ~ (kg)	L1	D1 Pin \varnothing	L2 Height	X Sheet thickness	B1
K 32.1 UZ	2500 N	1800 N	2.4	203				