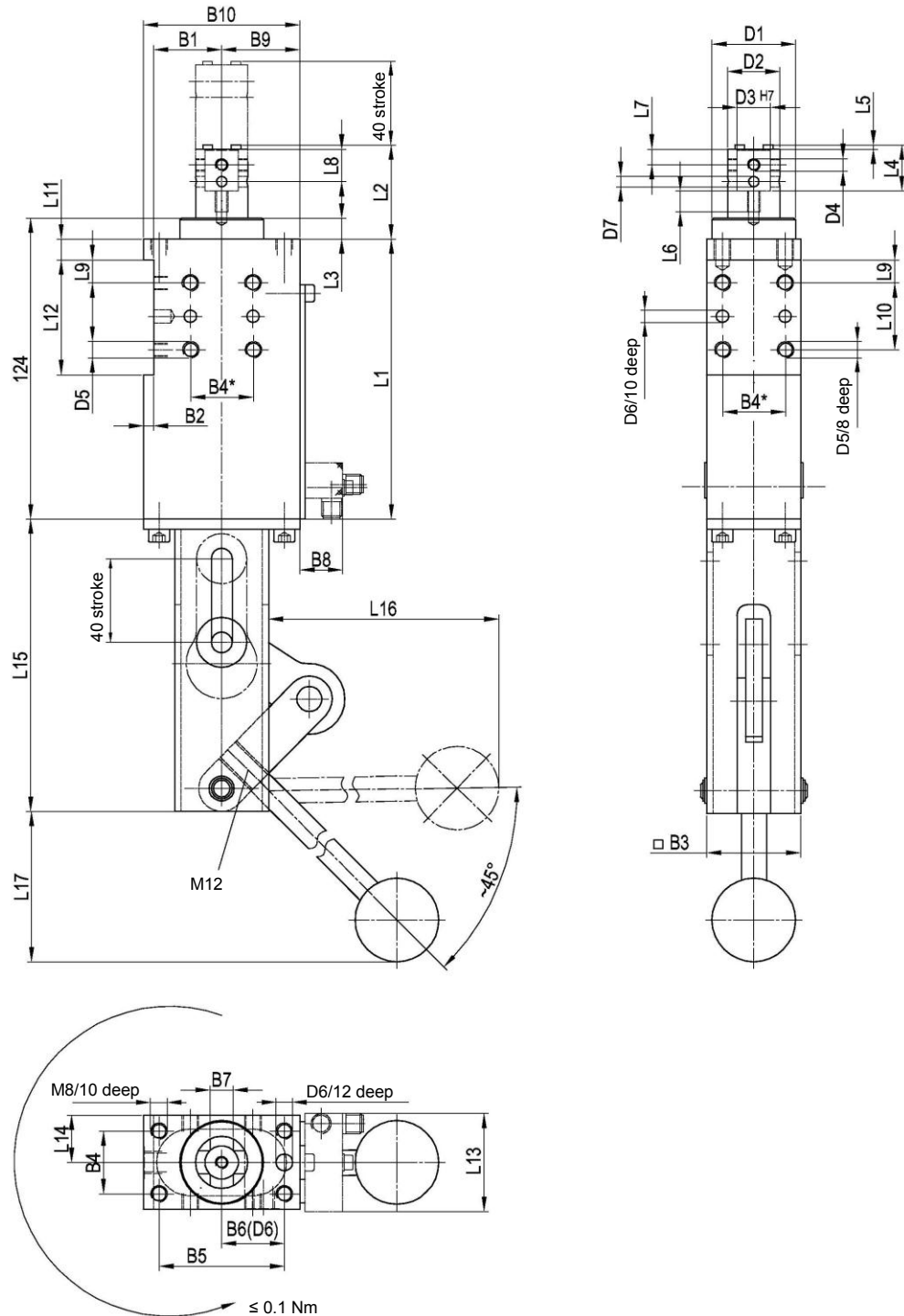


# Retractable Locating Pin

Manual version, anti-rotating, toggle locked, 40 mm stroke

# MSZK 40



**Ordering example:**

MSZK 40 T12 40 stroke

MSZK 40: Type  
 T12: sensing system  
 40: stroke

**Ordering code for Tünkers sensing system:**

...T00 Without sensing system (standard)  
 ...T12 Inductive switch 24V, 1 connector with integrated LED's

Hand lever is supplied for on-site assembly.

\*Tolerance for dowel holes  $\pm 0.02$ , for screw holes  $\pm 0.1$

Type	Stroke	Stat. side force max.	Piston - $\varnothing$	Weight (Kg)	B1 $\pm 0.1$	B2	B3	B4*	B5 $\pm 0.2$	B6 $\pm 0.02$	B7 $+0.1/+0.05$	B8	B9	B10	D1 f7	D2 f7	D3 H7
MSZK 40	40	150	40	1.8	32.5	5	50	30	60	30	11	21	37.5	75	40	25	16

Type	D4	D5	D6 H7	D7	L1	L2	L3	L4	L5	L6	L7	L8	L9 $\pm 0.1$	L10 $\pm 0.1$	L11	L12 $\pm 0.1$	L13	L14 $+0.1$	L15	L16	L17
MSZK 40	M6	M8	8	5	114	45	10	22	2	10	7.5	15.5	11	32	10	55	47	22.5	140	200	130