



Operation instructions Pin pull cylinder

Version: 06.05.2010

MSZK 40 /B
MSZKR 40

1. Description

The pin pull cylinder is a heavy-duty tool designed for positioning work in the metal plate processing industry. It consists of a manually operated toggle joint mechanism and a housing with an integrated piston rod guide and mounting possibilities on the front and the side.

2. Safety

The pin pull cylinder was not designed as an independent tool and has therefore not been fitted with its own safety facilities. In order to comply with the safety requirements, the unit must be integrated into a production system and must be connected to a suitable safety control system.

In the event of any failures resulting in a risk to people's safety, the use of the pin pull cylinder must be discontinued immediately. Maintenance work must only be carried out by properly trained staff when the machine is not running.

After carrying out such maintenance work, any protective devices must be fitted again properly.

3. Mounting the pin pull cylinder

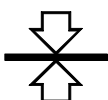
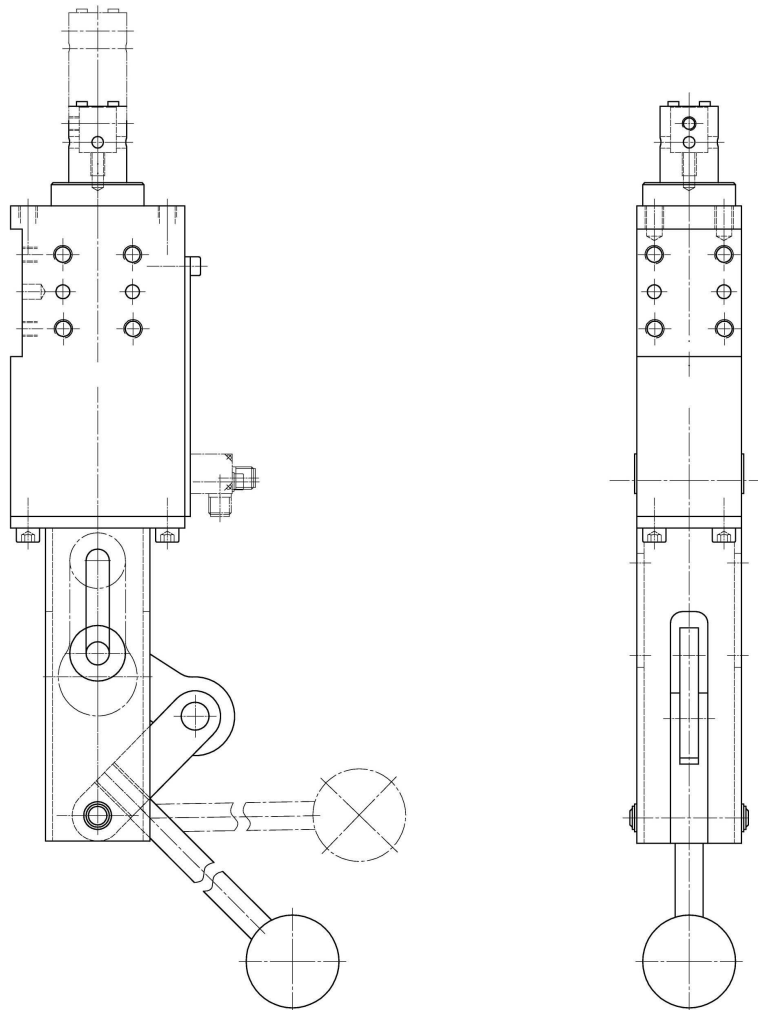
- The pin pull cylinder must be mounted onto the cylinder head or on the side of the housing using 4 fillister head screws.
- Connect the customer-supplied centring pin in the piston rod take-up using an M6x10 threaded rod or a shearing pin.

Note: The pin pull cylinder cannot be adjusted. This must be taken into account when designing and manufacturing the brackets / holders.

4. Maintenance

The pin pull cylinder was primarily designed for small series manufacturing applications and has been fitted with low-maintenance bearings and guides. Due to its closed structure no special maintenance is required.

Note: Cleaning the unit with a steam jet cleaner or dry ice will damage the pin pull cylinder.



TÜNKERS®
SPANNSYSTEME

TÜNKERS® Maschinenbau GmbH
Am Rosenkoth 8 • 40880 Ratingen
Postfach 10 17 16 • 40837 Ratingen
Tel. 02102 4517-0 • Fax 02102 445808
Internet www.tuenkers.de