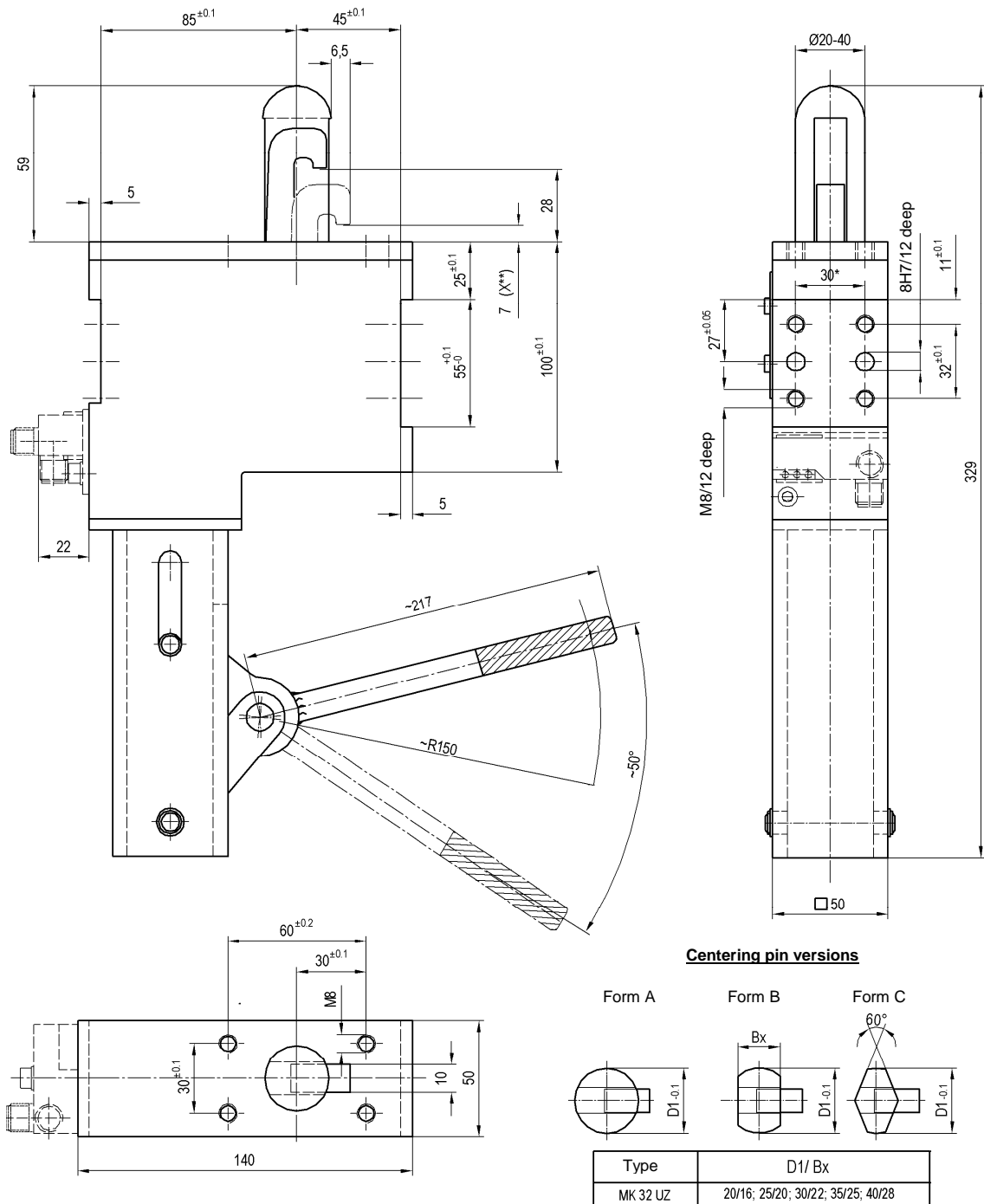


# Underbody Clamp

With centering pin; manually operated, toggle locked, for seat  $\varnothing$  20-40 mm

# MK 32 UZ



**Bestellbeispiel:**

MK 32 UZ A 30 X T12  
MK 32 UZ B 30/22 X T12

MK 32 UZ: Type  
B: Pin version  
30/22: Pin measurement D1, Bx  
X: Sheet thickness  
T12: Sensing system

\*\*Ordering dimensions for special versions.  
Standard as mentioned.

Hand lever and adapter are delivered unmounted.

\*Tolerance for dowel holes  $\pm 0.02$ , for threaded holes  $\pm 0.1$ .

Maximum load (\*\*\*) depends on diameter of dowel pin and geometry of the hook.

**Ordering example Tünkers sensing systems:**

...T00 Without sensing  
...T12 Inductive sensor 24 V, 1 output with integrated LED's

**Attention!**

External throttle check valves must be provided on assembly. They are not included in the scope of delivery!

Type	***Holding force max.	***Clamping force	Weight ~ (kg)
MK 32 UZ	250 daN	180 daN	4.0