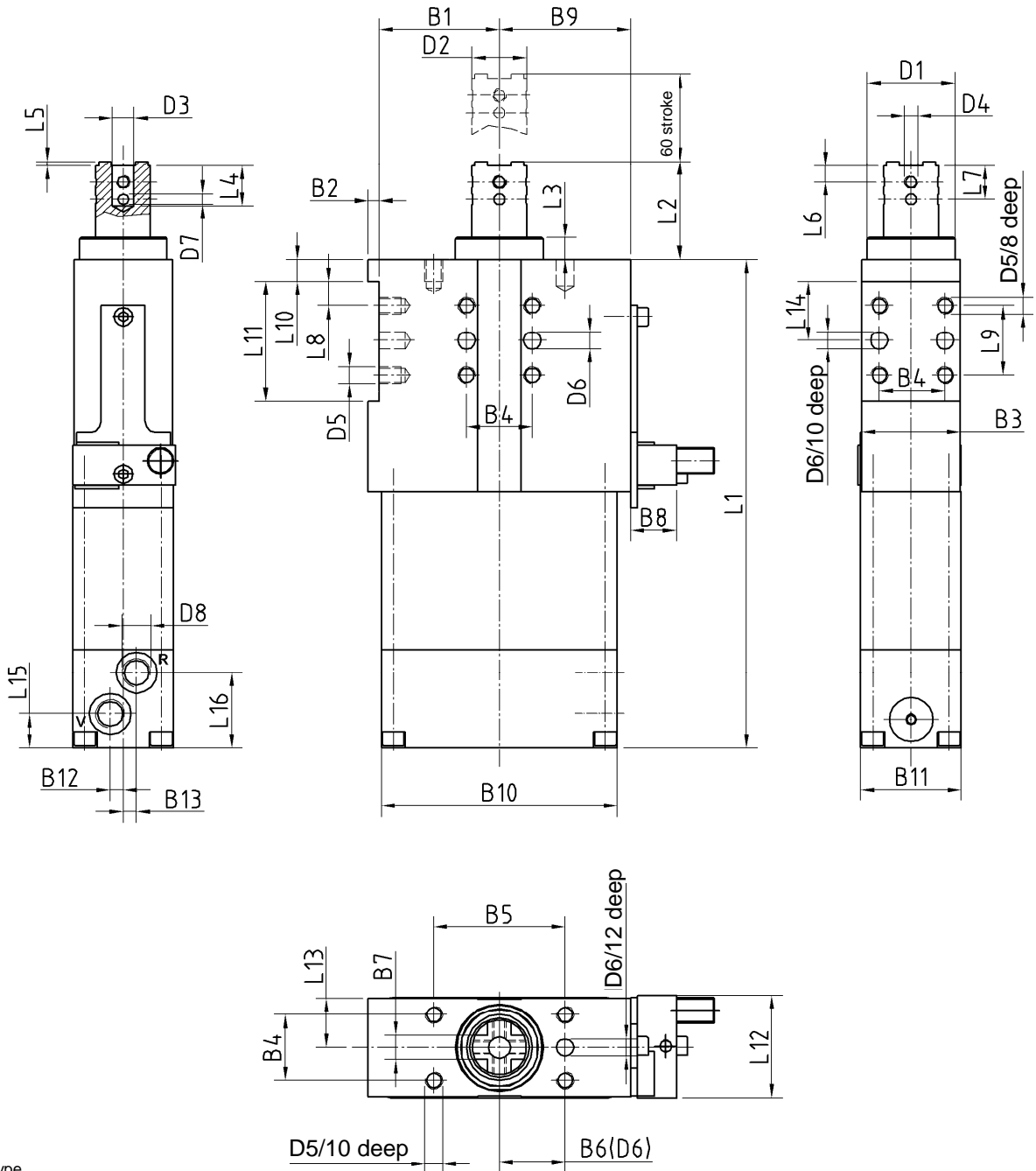


Eco Retractable Locating Pin

with built-in control technology for a reduced air consumption,
anti-rotating, 60 mm stroke

SZE... .1 B



Ordering example:

SZK 63.1 B T12

SZE 63.1 B: Type
T12: Sensing system

Ordering example Tünkers sensing system:

...T12 Inductive sensor 24 V, 1 output
with integrated LED's

* Tolerance for dowel holes ± 0.02, for threaded holes ± 0.1.
Medium: Air, max. 6 bar, operation permitted with oil-free air.

Type	Stroke	Static side force max.	Piston Ø	Weight ~ (kg)
SZE 40.1 B	60	150 N	40	2,1
SZE 63.1 B	60	200 N	63	3,9

Attention!

External throttle check valves must be provided on assembly.
They are not included in the scope of delivery!

Type	B1	B2	B3	B4*	B5 ±0,2	B6 ±0,02	B7 +0,1 +0,05	B8	B9	B10	B11*	B12	B13	D1 f7	D2 f7	D3 H7	D4	D5	D6 H7	D7	D8
SZE 40.1 B	32,5	5	45	30	60	30	11	21	37,5	75	45	6,5	5,5	40	25	10	M6	M8	8	5	G1/8
SZE 63.1 B	55	5	45	30	60	30	11	21	60	108	46	6	6	40	25	10	M6	M8	8	5	G1/4

Type	L1	L2	L3	L4	L5	L6	L7	L8 ±0,1	L9 ±0,1	L10	L11 +0,1	L12	L13	L14 +0,05	L15	L16
SZE 40.1 B	251	45	10	18,5	2	7,5	15,5	11	32	10	55	47	22,5	27	17	30
SZE 63.1 B	264	45	10	18,5	2	7,5	15,5	11	32	10	55	47	22,5	27	15,5	34,5