

# Underbody Clamp

# SZ 50 UZ...

With clamping hook and locating pin, self-locking type

**Intermediate position:**

Clamping hook and locating pin retracted  
Option: (50 stroke)

**Intermediate position:**

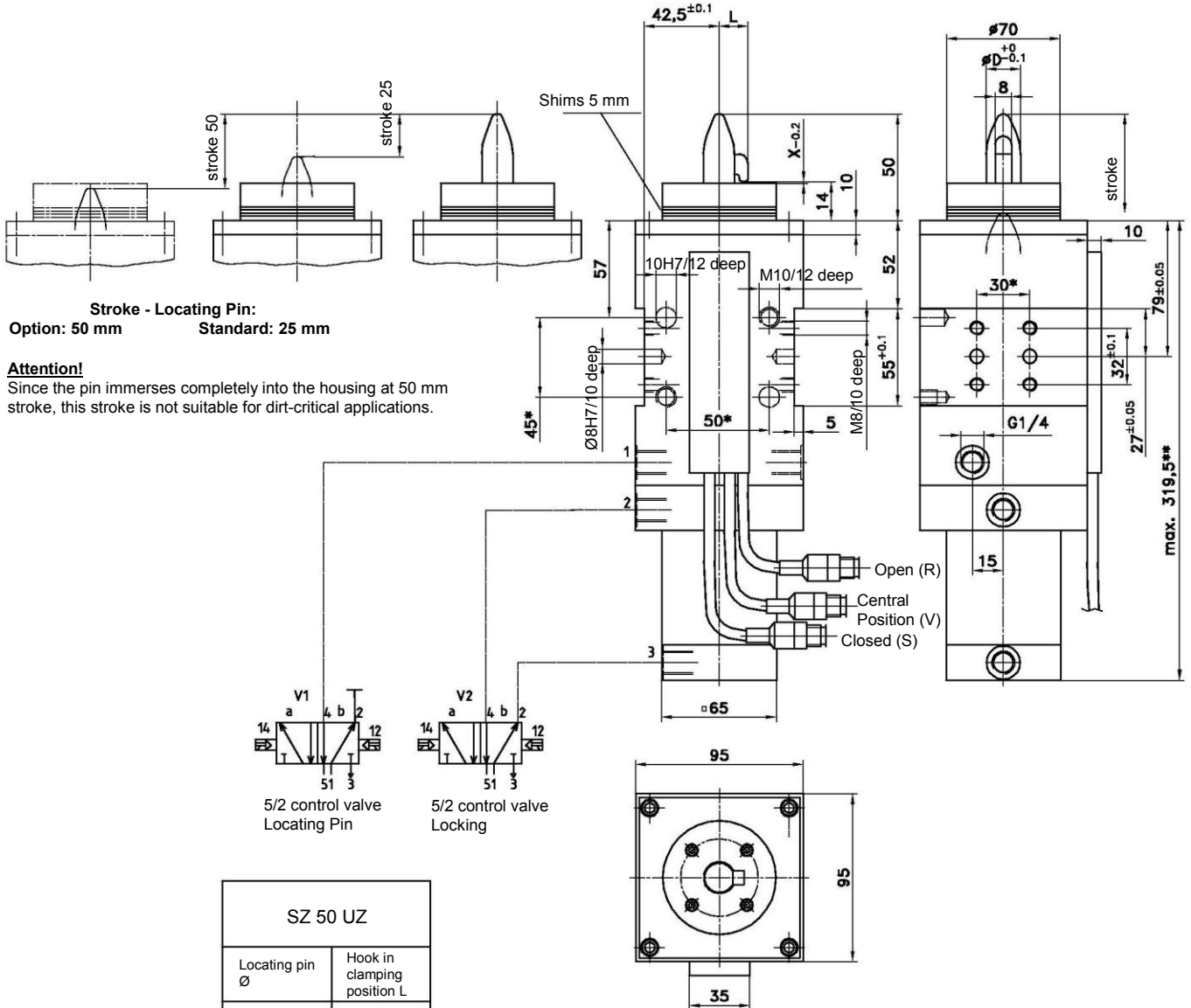
Clamping hook and locating pin retracted  
(25 stroke)

**Basic position:**

Locating pin extended  
Clamping hook retracted

**End position:**

Clamping hook locked  
Locating pin extended



**Stroke - Locating Pin:**

Option: 50 mm

Standard: 25 mm

**Attention!**

Since the pin immerses completely into the housing at 50 mm stroke, this stroke is not suitable for dirt-critical applications.

SZ 50 UZ	
Locating pin Ø	Hook in clamping position L
17-20	15
21-25	18
26-30	23
31-35	25
36-40	29

**Ordering example:**

SZ 50 UZ 25 T31 D X

SZ 50 UZ:

- Type
- 25: Stroke (Option: 50 mm)
- T31: Sensing system
- D: Diameter locating pin
- X: Sheet thickness

**Bestellschlüssel Tünkers Abfragesystem:**

...T31 Inductive sensor, 3 outputs

**Valve position**

1. Starting position  
Locating pin extended  
Clamping hook retracted
2. Clamping hook locked
3. Release clamping hook
4. Locating pin retracted
5. Extend locating pin

**V1 V2 Initiator**

- |   |   |   |
|---|---|---|
| a | a | V |
| a | b | S |
| a | a | V |
| b | a | R |
| a | a | V |

\*\*Clamping force at 6 bar: 300 daN  
\*\*Holding force max.: 380 daN  
Weight: ca. 7.5 kg

\*Tolerance for dowel holes ± 0.02, for threaded holes ± 0.1.

Medium: Air, max. 6 bar, operation permitted with oil-free air.

Actual, transferable force (\*\*) depends on pin diameter and geometry of the hook.

**Attention!**

External throttle check valves must be provided on assembly. They are not included in the scope of delivery!