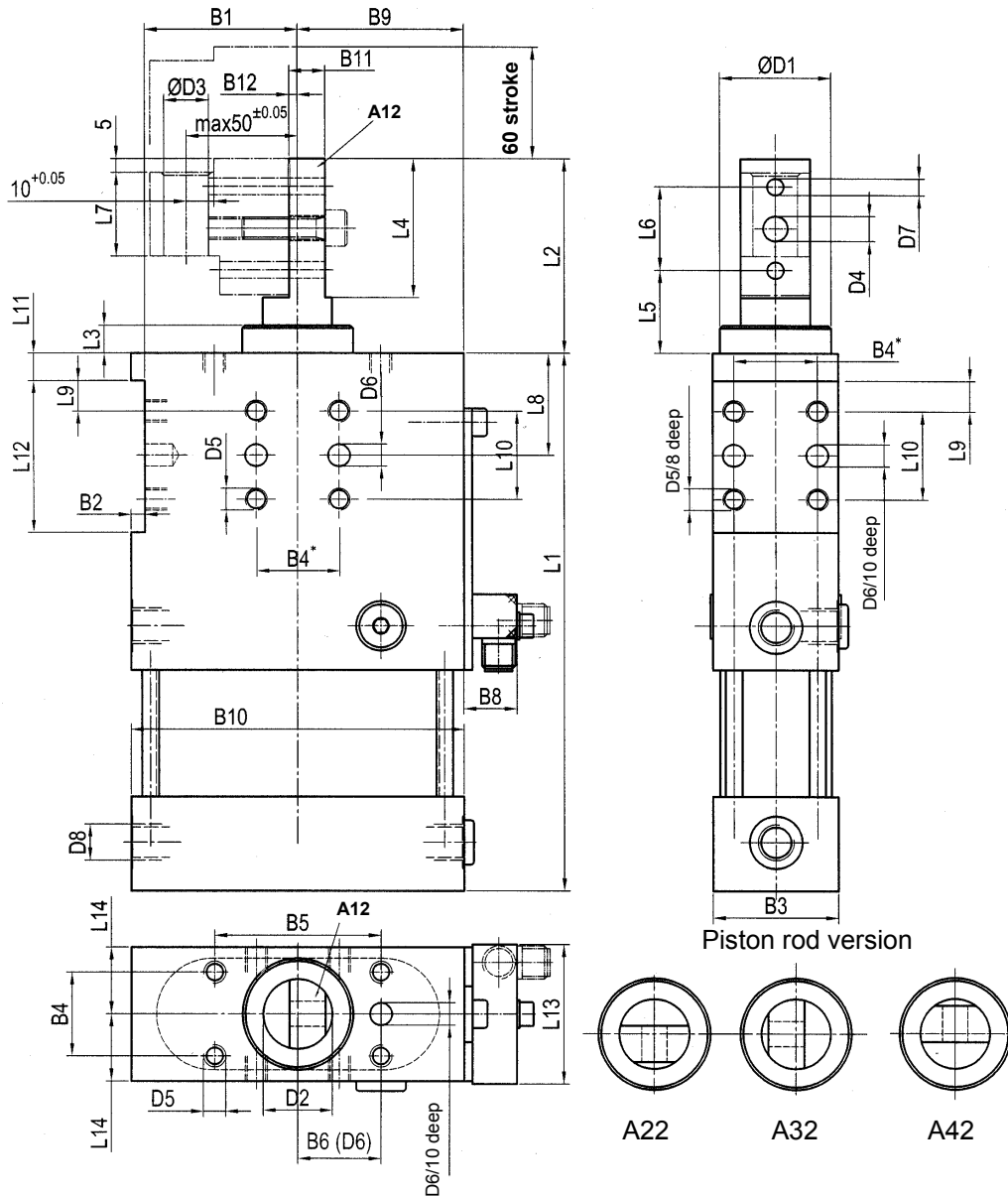


# Retractable Locating Pin

for Off-Set centering pins, anti-rotating

## SZK... .1 BR3 A.2



**Ordering example:**

SZK 40.1 BR3 A12 T12 x 60

SZK 40.1 BR3: Type  
 A12: Piston rod version  
 T12: Sensing system  
 60: Stroke (special strokes 40 < 60 mm)

Side force max.: 200 N

\*Tolerance for dowel holes ± 0.02, for threaded holes ± 0.1.

Medium: Air, max. 6 bar, operation permitted with oil-free air.

**Attention!**

External throttle check valves must be provided on assembly. They are not included in the scope of delivery!

**Ordering example Tünkers sensing system:**

...T12 Inductive sensor 24 V, 1 output, with integrated LED's

| Type         | Stroke | Stat. side force max (N) | Piston-Ø (mm) | Weight ~ (kg) |
|--------------|--------|--------------------------|---------------|---------------|
| SZK 40.1 BR3 | 60     | 150 N                    | 40            | 2.1           |
| SZK 63.1 BR3 | 60     | 200 N                    | 63            | 3             |

| Type         | B1 ±0.02 | B2 | B3 | B4* | B5 ±0.2 | B6 ±0.02 | B8 | B9   | B10 | B11 | B12 ±0.05 | D1 f7 | D2 f7 | D3 H7 | D4 | D5 | D6 H7 | D7 H7 | D8   |
|--------------|----------|----|----|-----|---------|----------|----|------|-----|-----|-----------|-------|-------|-------|----|----|-------|-------|------|
| SZK 40.1 BR3 | 32.5     | 5  | 45 | 30  | 60      | 30       | 21 | 37.5 | 75  | 13  | 3         | 40    | 25    | 16    | 9  | M8 | 8     | 6     | G1/8 |
| SZK 63.1 BR3 | 55       | 5  | 45 | 30  | 60      | 30       | 21 | 60   | 120 | 13  | 3         | 40    | 25    | 16    | 9  | M8 | 8     | 6     | G1/4 |

| Type         | L1  | L2 | L3 | L4 | L5 | L6 ±0.02 | L7 | L8 ±0.05 | L9 ±0.1 | L10 ±0.1 | L11 | L12 +0.1 | L13 | L14 ±0.02 |
|--------------|-----|----|----|----|----|----------|----|----------|---------|----------|-----|----------|-----|-----------|
| SZK 40.1 BR3 | 235 | 70 | 10 | 50 | 30 | 30       | 30 | 37       | 11      | 32       | 10  | 55       | 47  | 22.5      |
| SZK 63.1 BR3 | 235 | 70 | 10 | 50 | 30 | 30       | 30 | 37       | 11      | 32       | 10  | 55       | 47  | 22.5      |