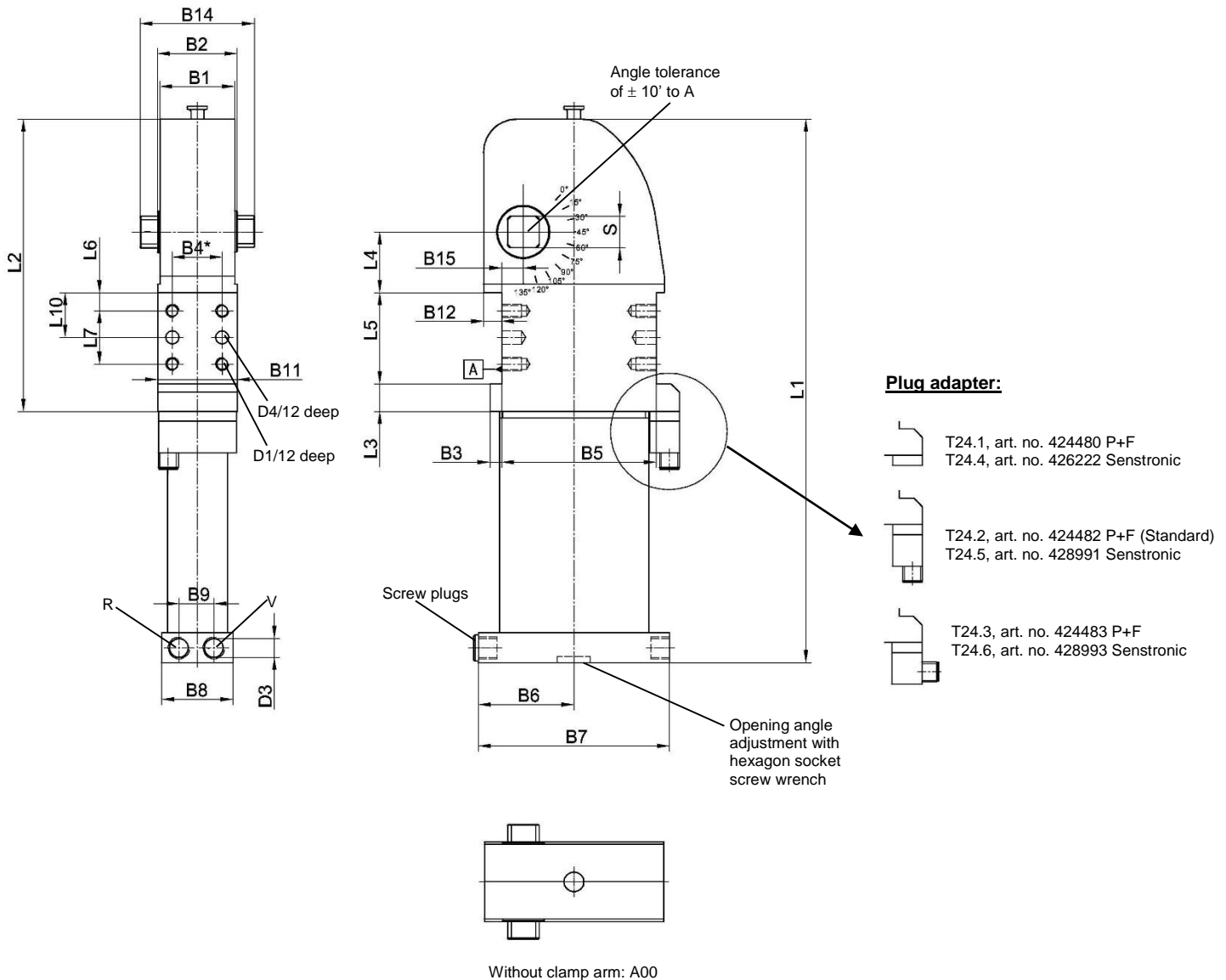


Universal Clamp

Stepless adjustable opening angle,
ca. 30% reduced air consumption at unchanged clamping force

U/U2 50, 63 A00
5° - 135°



Ordering example:

U 50 W A00 T24.2

U 50: Type
W: **On request:** Housing coating resistant to welding beads
A00: Without clamp arm
T24.2: Sensing system (standard)

Opening angles:

Stepless adjustable in the range of 5° to 135° (type U...).

On request:

Housing coating resistant to welding beads

*Tolerance for dowel holes ± 0.02 , for threaded holes ± 0.1 .

Medium: Air, max.6 bar, operation permitted with oil-free air.

Attention:

The use of external throttle check valves is recommended on assembly. They are not included in the scope of delivery!

Optionally an operation without external throttle check valves is possible.

Ordering example Tünkers sensing systems, two-piece:

...T24.1/4 Without plug adapter
...T24.2/5 With straight plug adapter (standard)
...T24.3/6 With plug adapter 90° angle

Plug adapter for inductive sensor 24 V, with integrated LED's, sensor plug M12x1

| Type | Holding torque max. | Clamping moment at 5 bar | Weight ~ (kg) | B1 | B2 -0,1 | B3 | B4* | B5 ±0,1 | B6 | B7 | B8 | B9 | B11 |
|---------|---------------------|--------------------------|---------------|----|---------|-----|-----|---------|------|-----|----|------|-----|
| U/U2 50 | 800 Nm | 160 Nm | 2.6 | 45 | 48 | 6.5 | 30 | 93 | 41 | 82 | 48 | 19.5 | 48 |
| U/U2 63 | 1500 Nm | 360 Nm | 3.8 | 48 | 54 | 7 | 30 | 93 | 57.5 | 115 | 43 | 21 | 48 |

| Type | B12 | B14 | B15 ±0,05 | D1 | D3 | D4 H7 | L1 | L2 | L3 | L4 ±0,05 | L5 +0,1 | L6 ±0,1 | L7 ±0,1 | L10 ±0,05 | S h9 |
|---------|------|-----|-----------|----|------|-------|-----|-----|------|----------|---------|---------|---------|-----------|------|
| U/U2 50 | 10.5 | 69 | 13 | M8 | G1/8 | 8 | 286 | 166 | 16.5 | 36.5 | 55 | 11 | 32 | 27 | 19 |
| U/U2 63 | 11 | 79 | 13 | M8 | G1/4 | 8 | 329 | 175 | 16.5 | 36.5 | 55 | 11 | 32 | 27 | 22 |