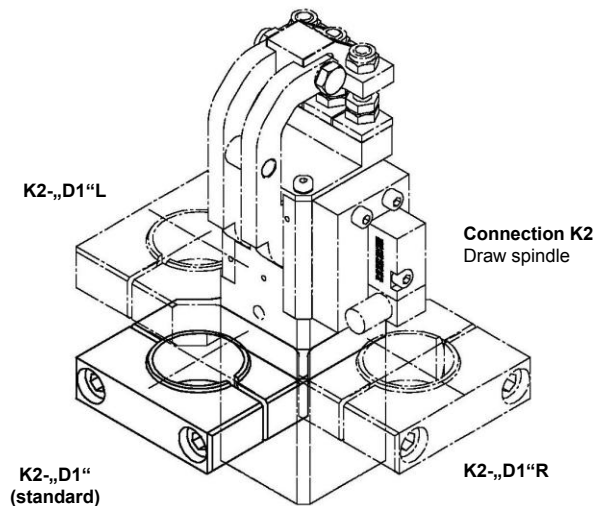
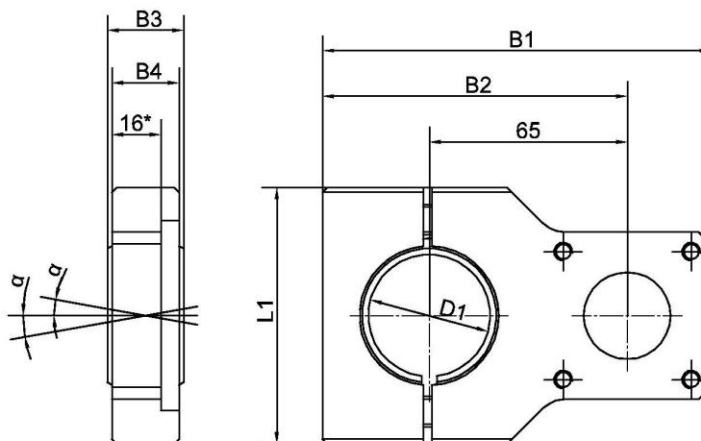
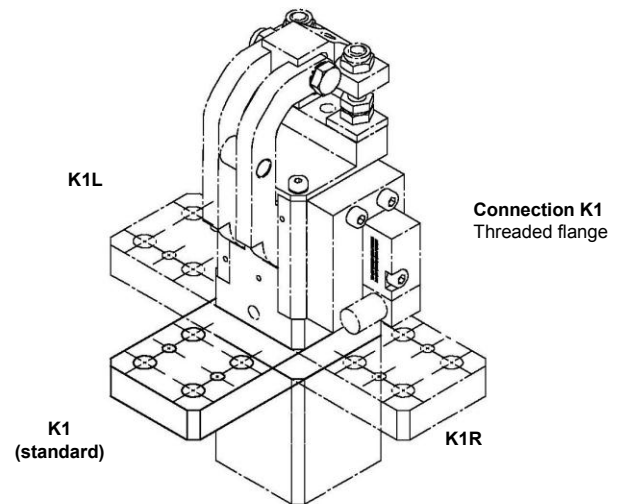
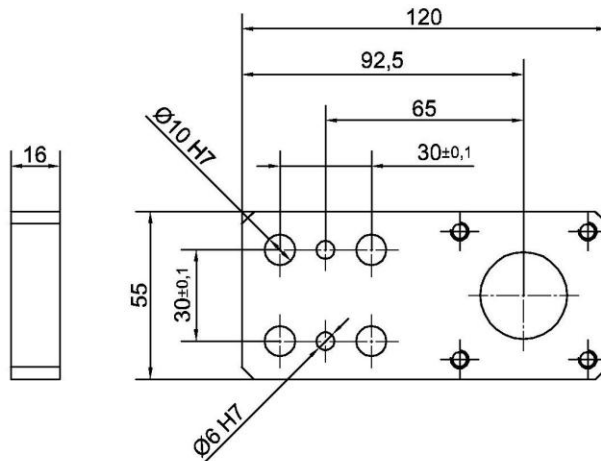


Connection versions

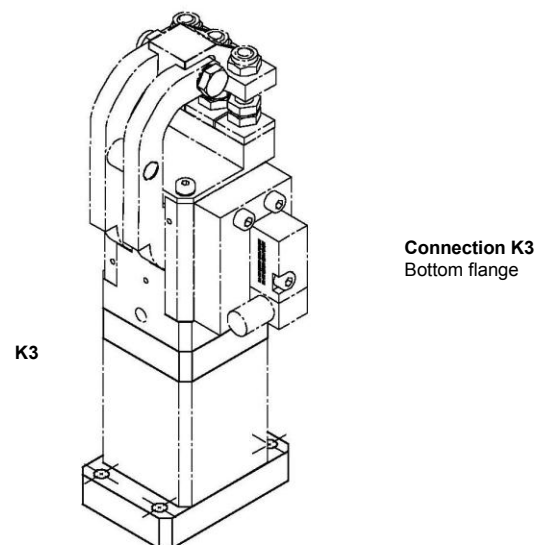
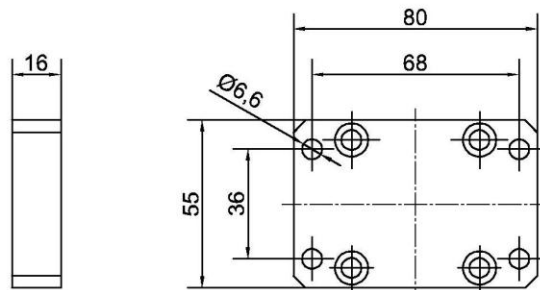
Pneumatic Gripper GN 32, GN 32 AS

Pneumatic Gripper GN 40, GN 40 AS

K..



D1	B1	B2	B3	B4	L1	α
25	115,5	88	19	16	65	15°
30	117,5	90	20	16	76	15°
40	129,5	102	25	19	84	15°



Ordering example draw spindle K2:

K2 GN 32 25L

K2: Draw spindle
GN 32: Pneumatic Gripper type
25: Diameter „D1“
L: Version left
(„R“ = right)