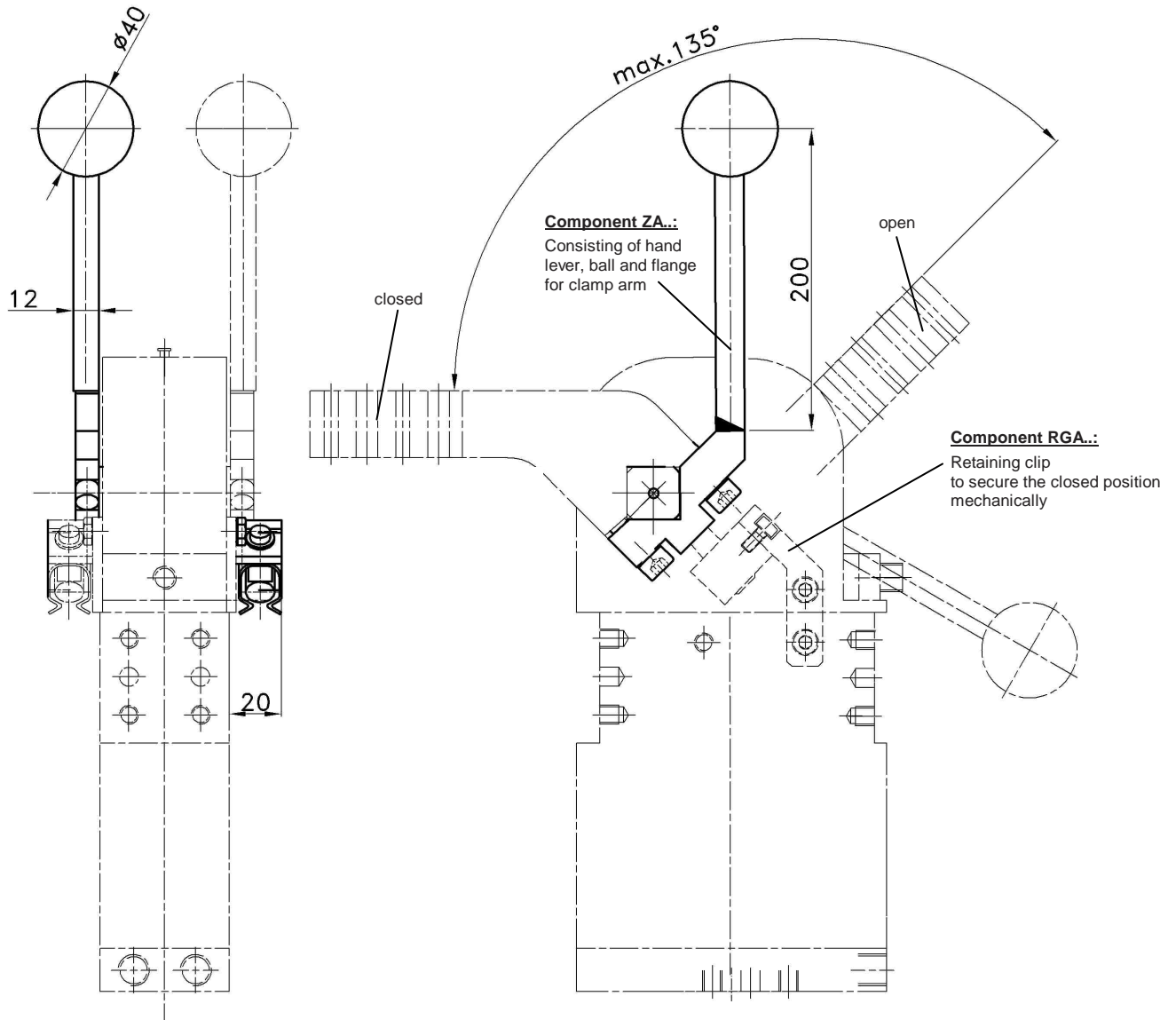


Manual operation ALPHA-series

Single parts for manual operation

ZA.../RGA..



Ordering example complete clamp:

APH 50 Z T12

APH: Type
50: Size
Z: Hand lever
Z RG = hand lever and retaining clip (closed position)
T12: Sensing system

Ordering example hand lever:

ZA 50

ZA: Hand lever complete consisting of:
hand lever, ball and flange for clamp arm
50: Size ALPHA clamp

Ordering example retaining clip (closed position):

RGA 50

RGA: Retaining clip, (closed position)
50: Size ALPHA clamp

The hand lever is delivered unmounted for on-site mounting.

For further technical information see data sheet "APH...".

For further clamp arm versions see data sheet „Clamp arms - jaws for ALPHA-clamps“.

Medium: Air, max. 6 bar, operation permitted with oil-free air.

*Tolerance for dowel holes ± 0.02 , for threaded holes ± 0.1 .