

Tünkers Linear Motion series

size 25

including ordering examples

TLM 25

E-TLM 25

I-TLM 25

Product description:

The linear unit of the TLM series size 25 is a small modular linear unit designed for use on grippers. As a drive system it is possible to order the unit with a pneumatic cylinder (TLM 25), with a 24V DC motor (E-TLM 25) or with a 24V servo motor (I-TLM 25). The linear unit is available in the standard strokes 100 mm, 200 mm and 300 mm.



Contents

Tünkers Linear Motion series	1
Contents	2
Ordering example for TLM 25 series	3
Data sheet TLM 25	5
Data sheet E-TLM 25	6
Data sheet I-TLM 25.....	7
Accessories.....	8
Further Linear units.....	13



Ordering example for TLM 25 series

Ordering example:

E-TLM 25 100 T02 LH TOS B1

E-TLM 25	Type (drive + size)
100	Stroke (in mm)
T02	Sensing system
LH	„Left hand“, motor / sensor mounted left hand
TOS	Optional: connection Linear unit
B1	Optional: retaining plate / slide with different hole patterns

Type:

The type indicates the different drive variants.

TLM 25: Pneumatic cylinder

E-TLM 25: Electric motor with 24 V DC motor

I-TLM 25: Electric motor with 24 V servomotor

The following values result for horizontal installation:

Max. load 25 kg

Max. loading torque M1 = 50 Nm

Max. loading torque M2 = 25 Nm

The cylinder force depends on the drive variant and the stroke.

for vertical installation, the maximum load is to be taken from the drive variants (10 - 15 kg depending on the stroke length).

Stroke:

Standard: 100, 200 or 300 mm

Units with reduced stroke on request.

Sensing system:

- T00: Without sensing system
- T02: Inductive sensor 24V, without LED display, mounted external / lateral
- T24.2: Two-piece Inductive sensing 24V, device plug M12x1 4-pole, with LED display

Assembly:

- LH: „Left hand“ - motor and sensors are being mounted in stroke direction left.
- RH: „Right hand“ - motor and sensors are being mounted in stroke direction right.

Connection Linear unit:

- TOS: Fixing material for connection to TOS profile (see accessories)
- TOS02: Fixing material for connection central to a TOS02 profile (see accessories)
- TGT: Fixing material for connection to TGT profile (see accessories)
- FP: Fixing material for connecting the base plate (see accessories)

Retaining plate / slide:

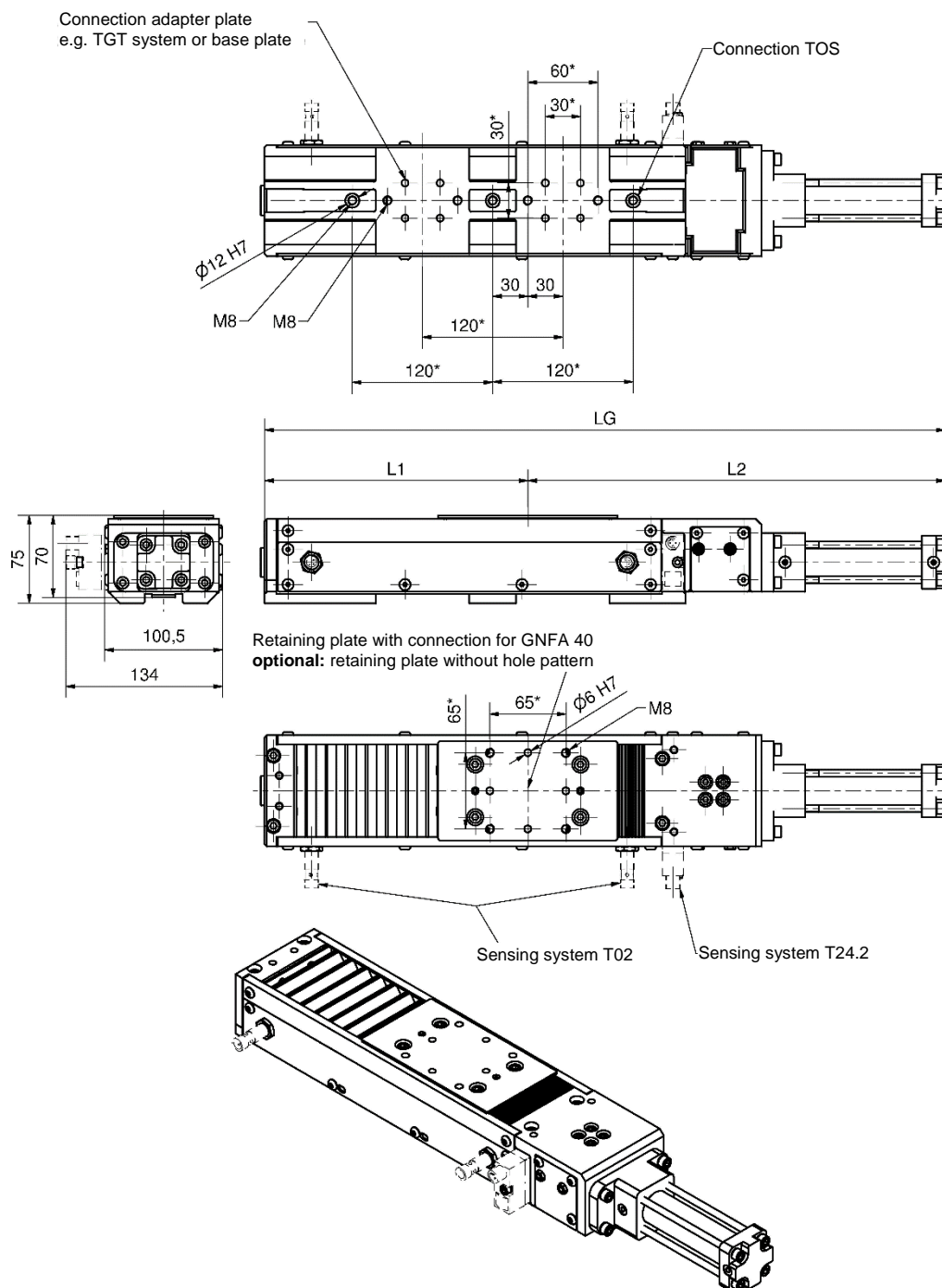
- B0: Retaining plate / slide without hole pattern. For rework of customized hole patterns (see accessories)
- B1: Retaining plate / slide with hole pattern - version 1. E-TLM – hole pattern as for fixing the linear unit / accessories (see accessories)
- B2: Retaining plate / slide with hole pattern - version 2. for fixing a GNFA 40 (see accessories)
- B3: Retaining plate / slide with hole pattern - version 3. for fixing a GF 40 (see accessories)

Tünkers Linear Motion (Linear unit)

modular construction, size 25, max. 300 mm stroke

TLM 25

Data sheet TLM 25



Presentation: TLM 25 100 T02 LH TOS B2, further product variants on request.

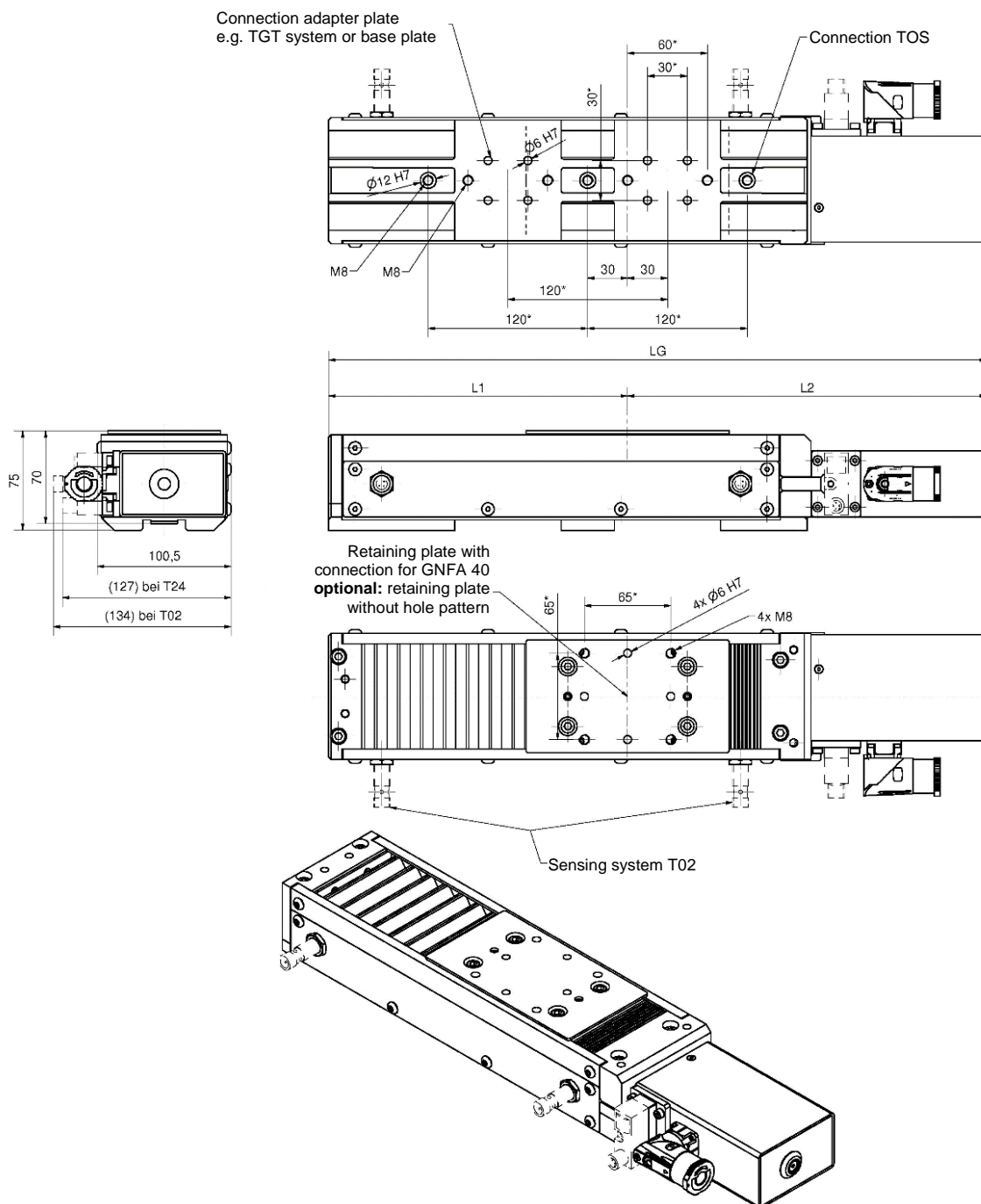
Stroke (mm)	Movement force (N)	LG (mm)	L1 (mm)	L2 (mm)	Connection TOS	Connection adapter	Weight (kg)
100	145	582	225	357	3	2	6.5
200	145	812	340	472	4	3	7.75
300	145	1042	455	587	5	4	9

Electric Tünkers Linear Motion (Linear unit)

E-TLM 25

24V DC motor, modular construction, size 25, max. 300 mm stroke

Data sheet E-TLM 25



Presentation: E-TLM 25 100 LH TOS B2, further product variants on request.

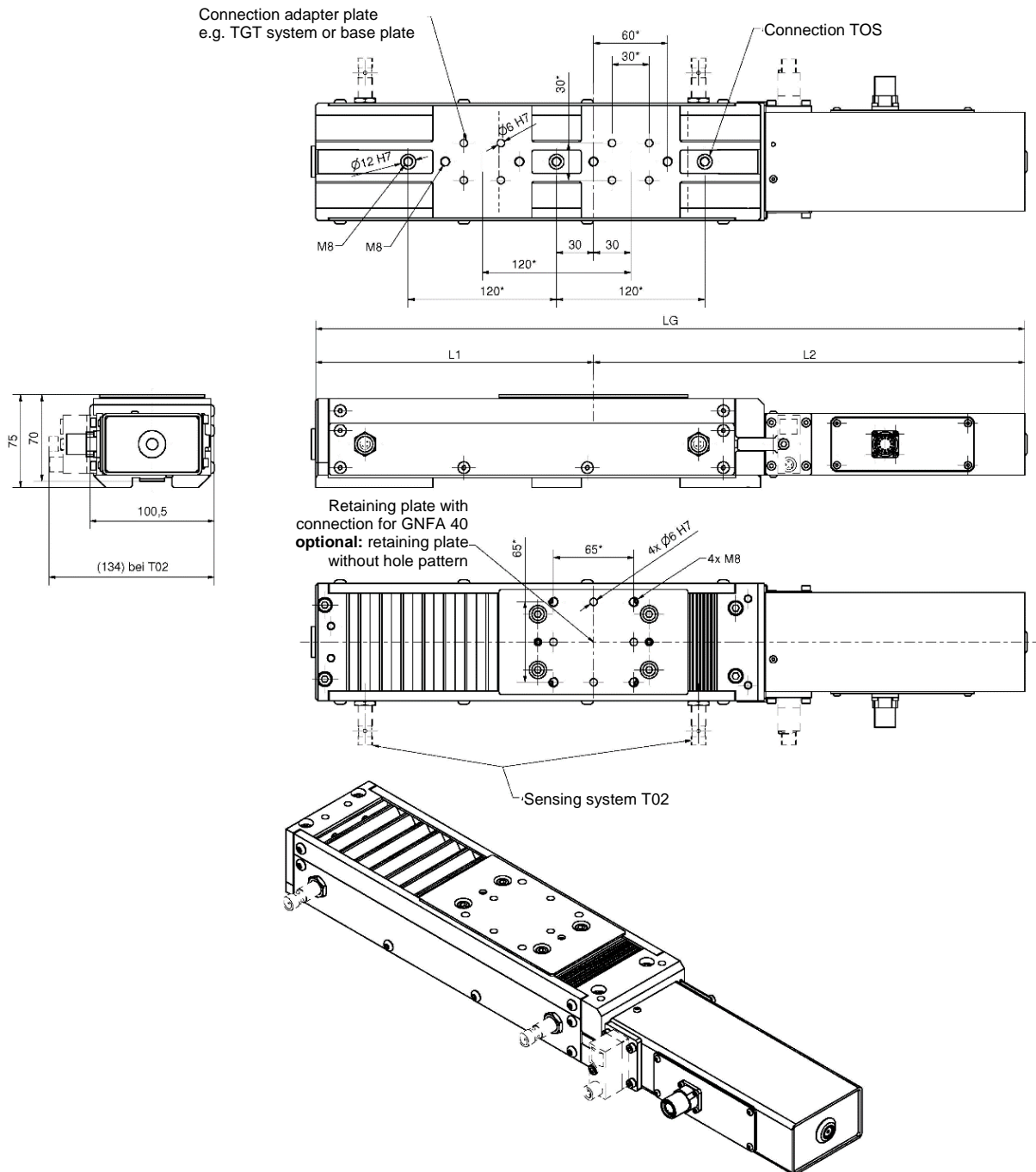
Stroke (mm)	Movement force (N)	LG (mm)	L1 (mm)	L2 (mm)	Connection TOS	Connection adapter	Weight (kg)
100	150	495	225	270	3	2	6.5
200	150	625	340	285	4	3	7.5
300	100	755	455	300	5	4	8.5

Intelligent-Tünkers Linear Motion (Linear unit)

24V servomotor, modular construction, size 25, max. 300 mm stroke

I-TLM 25

Data sheet I-TLM 25

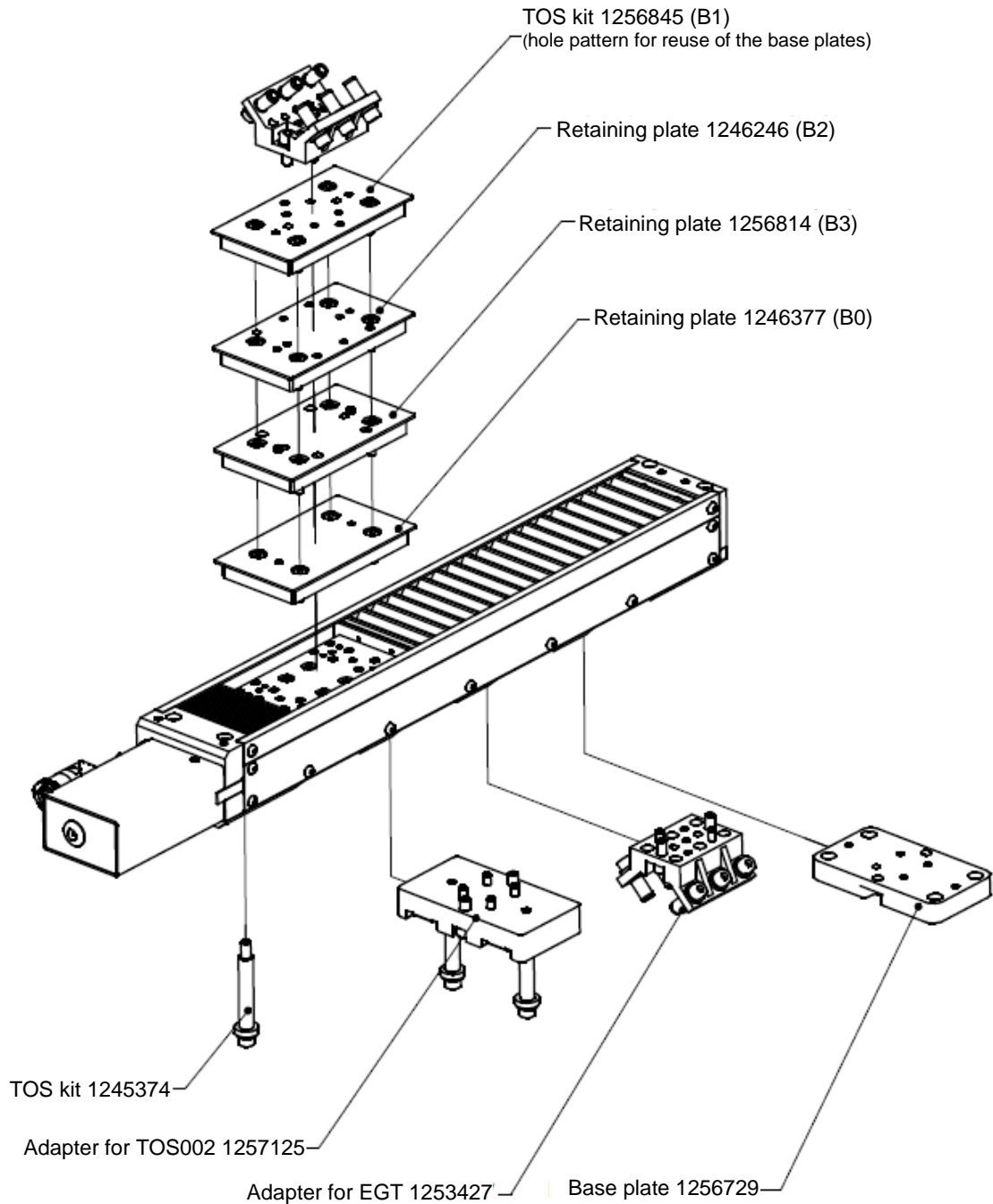


Presentation: I-TLM 25 100 T02 LH TOS B2, further product variants on request.

Stroke (mm)	Movement force (N)	LG (mm)	L1 (mm)	L2 (mm)	Connection TOS	Connection adapter	Weight (kg)
100	150	575	225	350	3	2	6,5
200	150	705	340	365	4	3	7,5
300	100	835	455	380	5	4	8,5

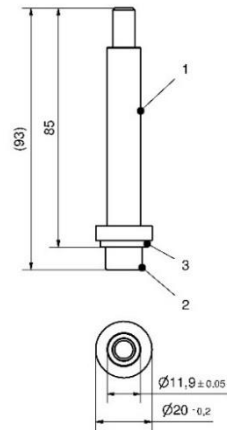
Accessories

Overview

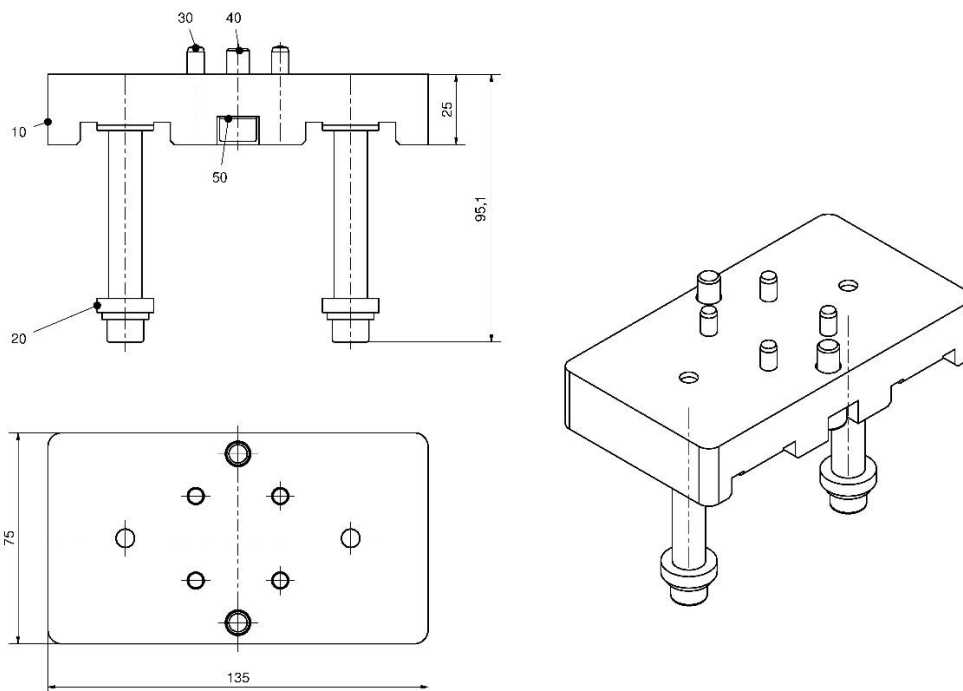


Connections Linear units:

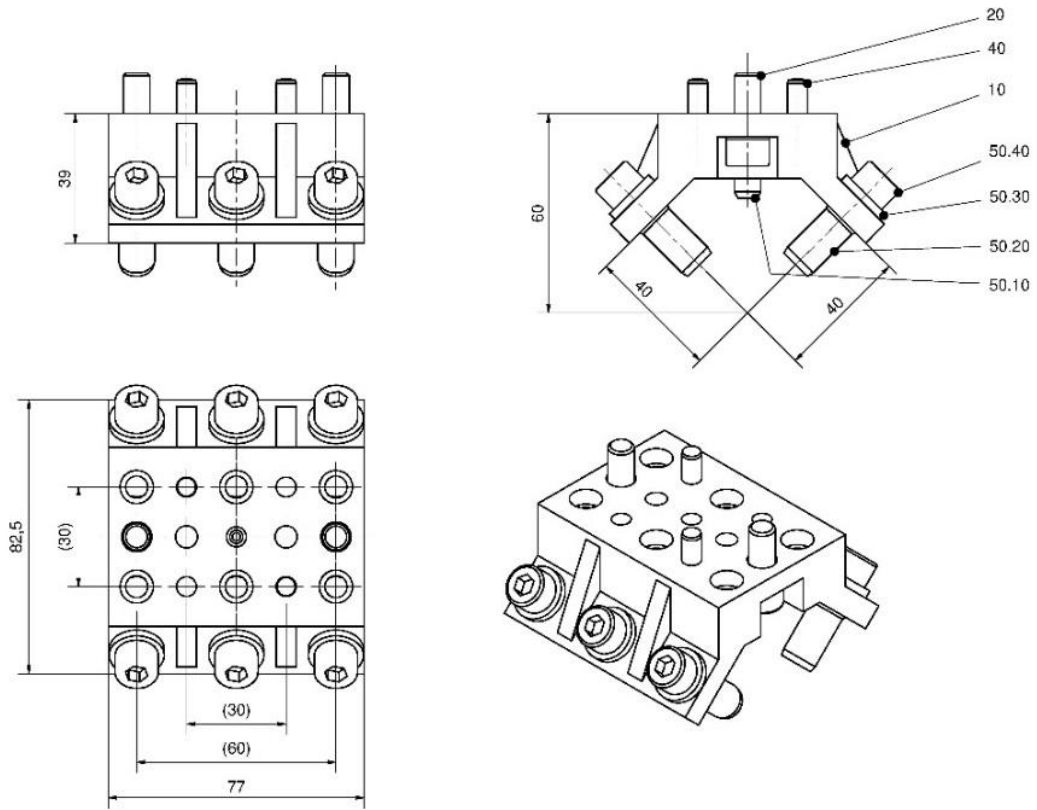
1245374 TOS kit for standard TOS connection



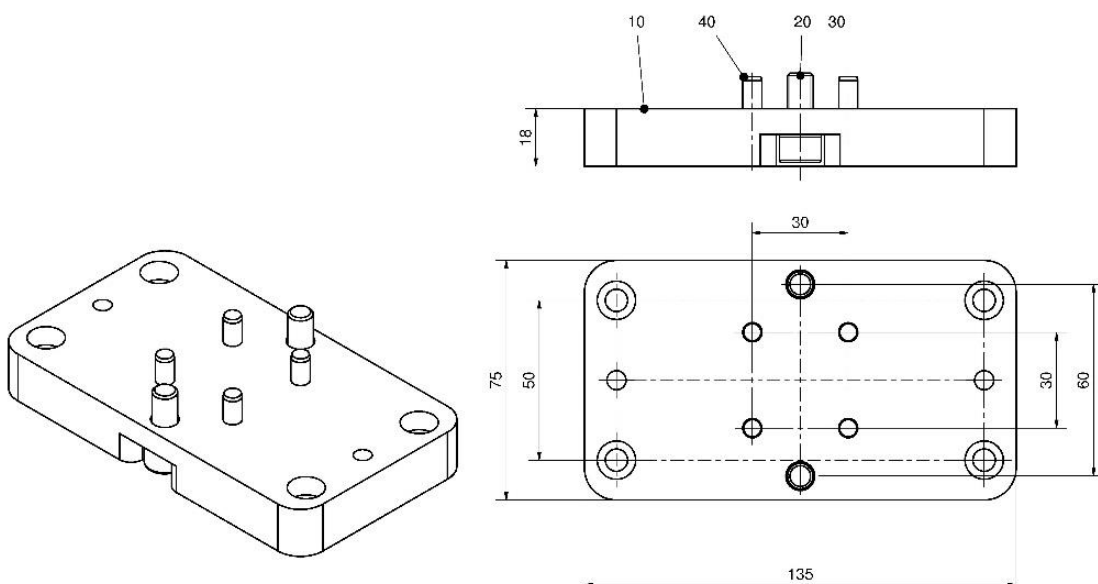
1257125 adapter for TOS02 connection



1253427 adapter for EGT connection

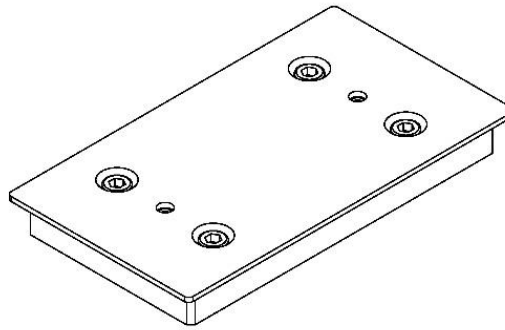
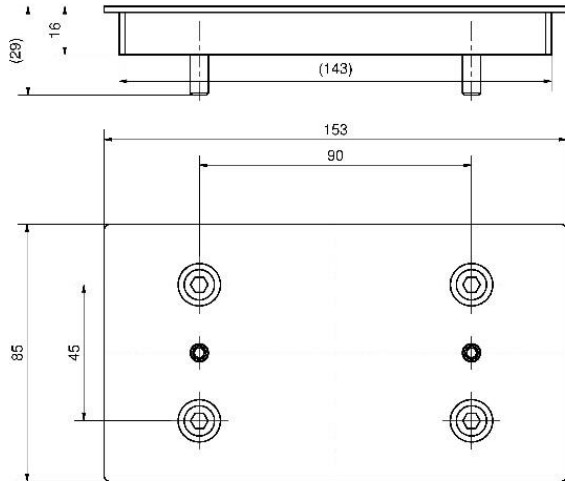


1256729 base plate

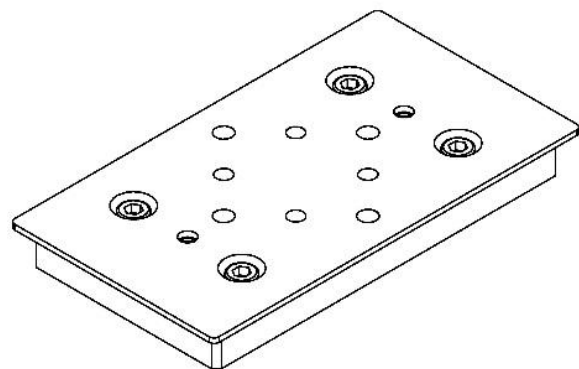
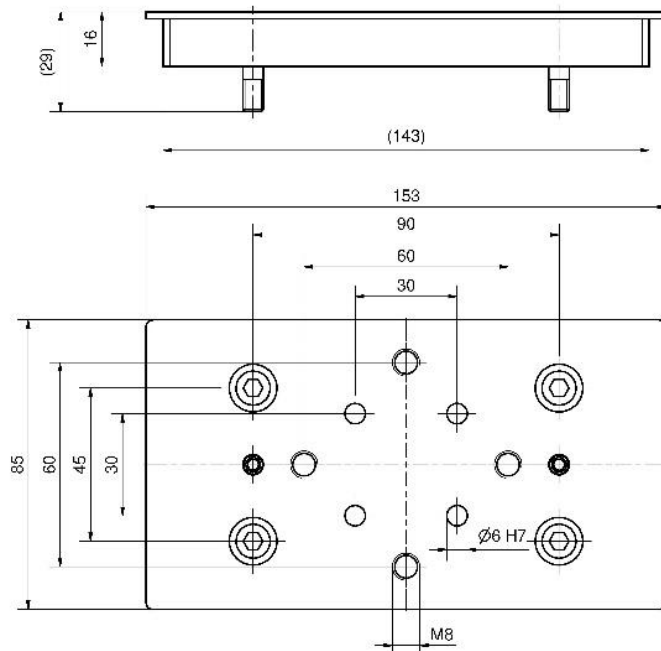


Retaining plate / slide

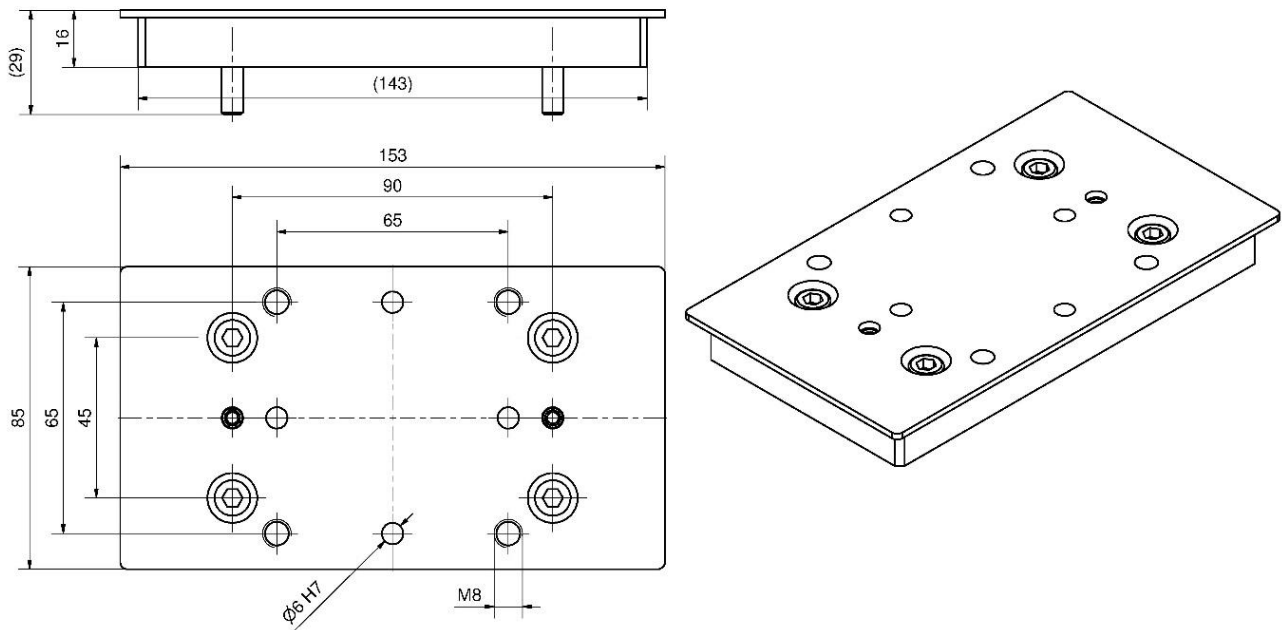
1246377 retaining plate without holes (B0)



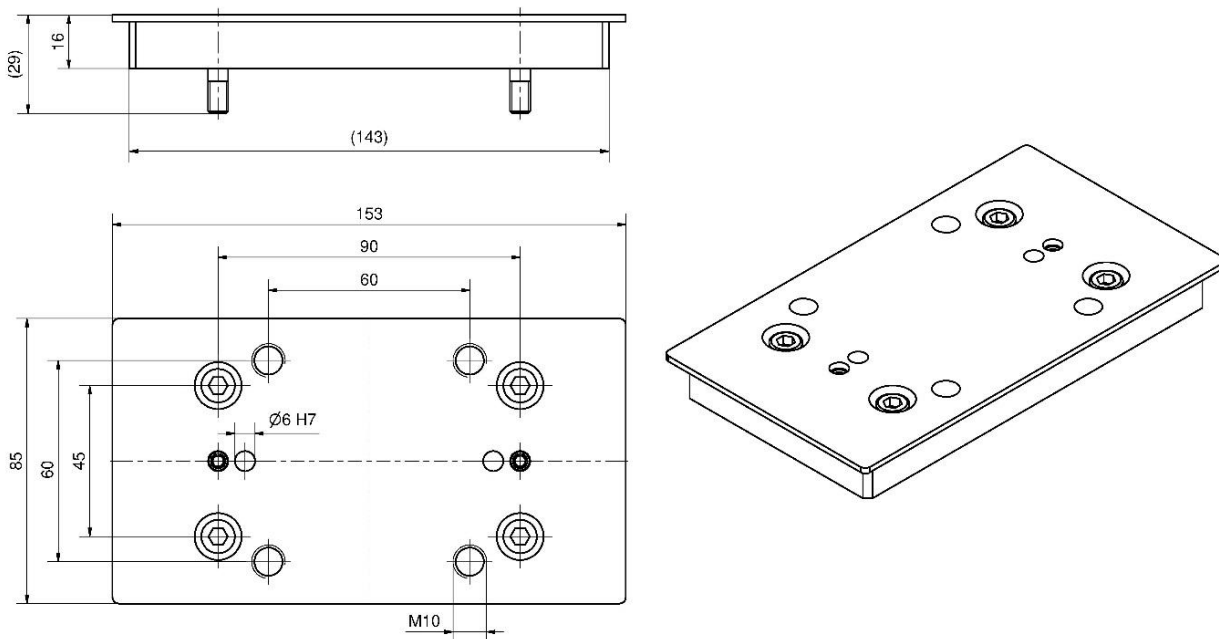
1256845 retaining plate with hole pattern for fixing E-TLM (B1)



1246246 Retaining plate with hole pattern for GNFA 40 (B2)



1256814 Retaining plate with hole pattern for GF40 (B3)



Further Linear units

Other linear units are offered in addition to the TLM series, see separate data sheets.

LE 15/30:

LE 15 and LE 30 are driven by a Vario Clamp and are suitable for low weights and short strokes.

http://www.tuenkers-modular-automation.de/d3import/get_document.cfm?documentId=P0016740

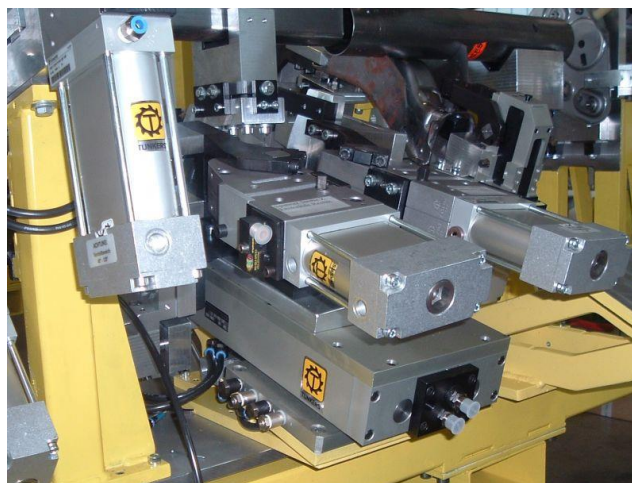


LE 60:

The compact linear unit LE 60 is designed for a max. capacity of up to 30 kg and a maximum stroke of 200 mm. The locking can be performed optionally on one side or on both sides as requested. This linear unit can be installed horizontally, vertically or upside down.

http://www.tuenkers-modular-automation.de/d3import/get_document.cfm?documentId=P0008136

Application example:



Tünkers Linear Motion (Linear unit)

modular construction, size 25, max. 300 mm stroke

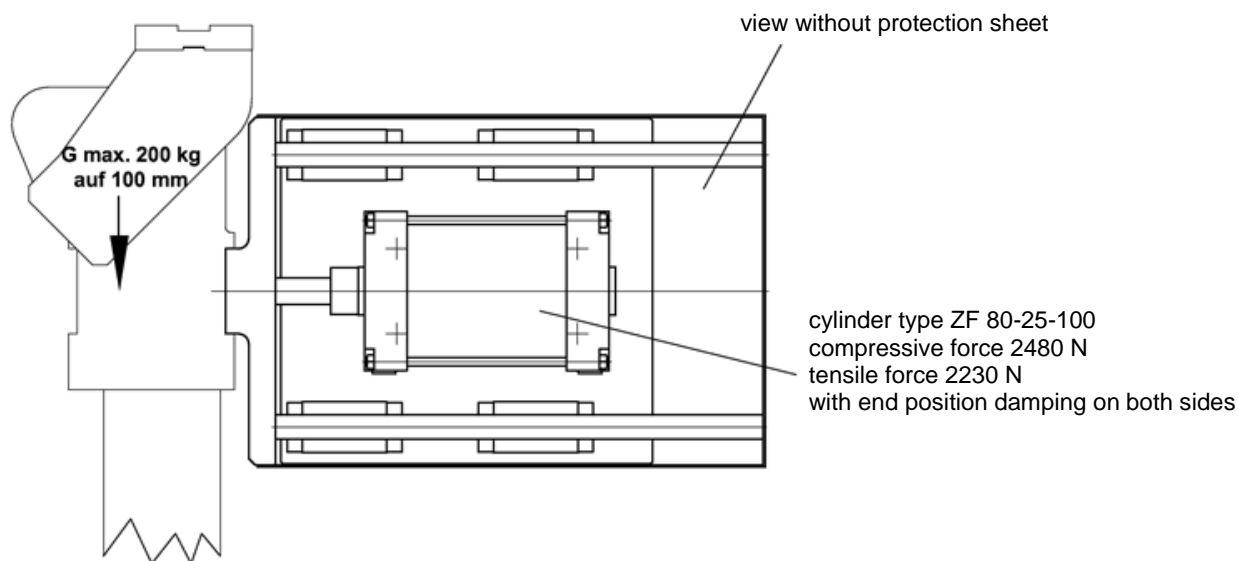
Further Linear units

LE 200 Q:

The LE 200 Q is suitable for 200 kg. In addition to the horizontal, this unit can also be installed transversely. Suitable for a narrow installation and in combination with other systems from Tünkers company or customer systems.

Application example:

Example KS 100.5



Tünkers Linear Motion (Linear unit)

modular construction, size 25, max. 300 mm stroke

Further Linear units

Tünkers Linear Motion:

In addition to TLM 25, Tünkers company offers further sizes of TLM units in the sizes 50, 100, 200 and 300. They are also offered with different drive concepts such as pneumatic and electric. All options complete an individual request.

Presentation: E-TLM 50

