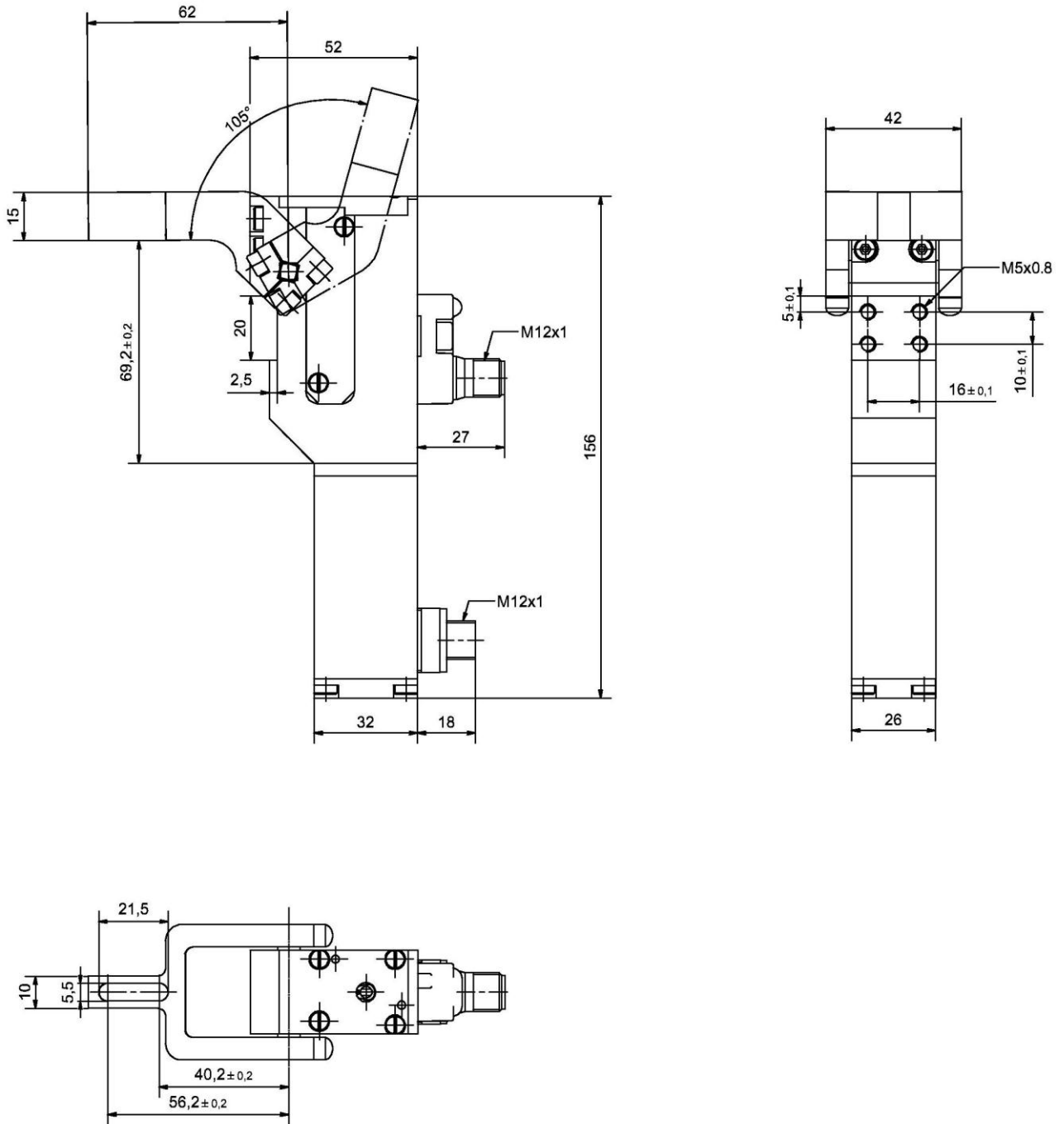


# Electric Clamp

24 V, totally enclosed, self-locking type,  
stepless adjustable opening angle, with electric motor

## EK 16.1



### Ordering example:

EK 16.1 A17 T12 105°

EK 16.1: Type  
A17: Clamp arm version  
T12: Sensing system  
105°: Opening angle

### Ordering example Tünkers sensing systems:

...T00 Without sensing system  
... T12 Inductive sensor 24 V, 1 output  
with integrated LED's

### Attention!

Only available with control module (see separate list).

### Opening angles:

Stepless adjustable in the range of 25° to 105°.

Further clamp arm versions on request.

### Technical data:

Holding torque max. :	30 Nm
Clamping moment:	10 Nm
Corresponds to piston Ø:	16
Weight kg:	0,4
Nominal voltage V:	24
Protection type DIN 40050:	IP 54
Closing time (sec):	1,0
Off time min. (sec):	3,5