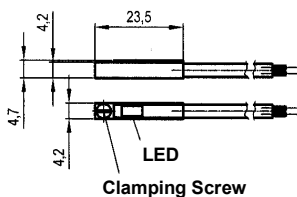
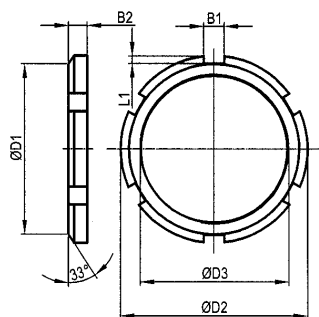
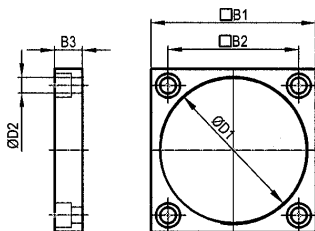
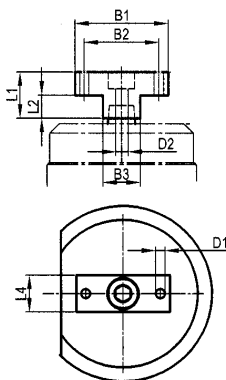
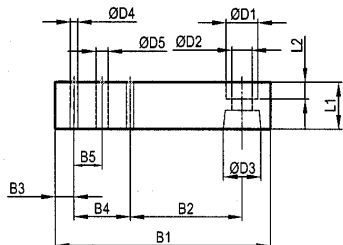
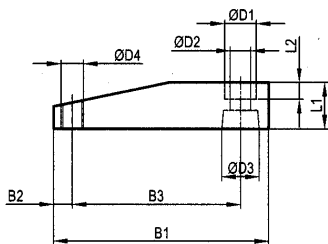


Pneumatic Swing Clamp

Accessories for SCB, PSB and SCT, PSS Swing Clamps

PSZ...



Clamp arm standard version

Type	B1	B2	L1 □	L2	D1 Ø	D2 Ø	D3 Ø	D4	Weight g	Material
PSZS 25	66	6	16	6	14	8,5	14	M6	32	Al hard- coated
PSZS 32	80	10	19	7	14	8,5	16	M8	55	
PSZS 40	90	10	19	7	14	8,5	16	M8	65	
PSZS 50	105	10	25	9	17	10,5	20	M12	130	
PSZS 63	115	10	25	9	17	10,5	20	M12	150	

Clamp Arm for holding mylars

Type	B1	B2 ±0,1	B3	B4 ±0,02	B5 ±0,1	L1 □	L2	D1 Ø	D2 Ø	D3 Ø	D4 H7	D5	Material
PSZSA 40	91	54	6	20	10	22	7	14	9	16	6	7	St 50
PSZSA 50/63	125	70	10	30	15	28	9	17	11	20	6	9	

Adapter for Clamp arm rest

Typ	B1	B2	B3	L1	L2	L4	ØD1	ØD2
PSSA 25	50	38	25	20	8	25	5,5	9
PSSA 32	60	45	30	25	10	30	7	9
PSSA 40	60	45	30	25	10	30	7	9
PSSA 50	65	48	30	30	12	32	9	11
PSSA 63	65	48	30	30	12	32	9	11

Threaded Mounting Plate

Type	B1 □	B2 □	B3	D1 Ø	D2 Ø	Weight g
PSZG 25	50	37	9	M40x1,5	5,5	80
PSZG 32	60	45	12	M50x1,5	6,5	100
PSZG 40	65	50	12	M55x1,5	6,5	120
PSZG 50	75	58	15	M65x1,5	8,5	150
PSZG 63	88	70	15	M80x1,5	8,5	200

Lock Nut

Type	B1	B2	L1	D1 Ø	D2 Ø	D3 Ø	Weight g
PSZK 25	7	8	3,3	49	56	M40x1,5	63
PSZK 32	8	8	3,8	60	68	M50x1,5	84
PSZK 40	8	8	3,8	67	75	M55x1,5	106
PSZK 50	11	9	4,3	76	85	M65x1,5	132
PSZK 63	11	10	4,3	91	100	M80x1,5	180

Position Sensor

Type	Weight g
PSZE 25-63	32

Position Sensor only for Type PSB / SCB for Magnetic Piston, with LEDs, can be slid into groove, complete with cable and clamping screw