

1. Description

The retractable pin cylinder is a high-power tool designed for use in locating points in the processing of sheet metal. It consists of a pneumatic cylinder in a housing with integrated piston rod guiding and mountings at the side.

The Retractable Locating Pin is equipped with an inductive sensing system, so that the position control is carried out via contactless sensors.

2. Safety

The Retractable Locating Pin was not conceived as a full tool supplied ready for independent use and has therefore not been fitted with its own safety equipment. Only when it is correctly installed in a production system and a corresponding safety control system is added, will all safety requirements be met.

Should any faults occur that place personnel at risk, the Retractable Locating Pin is to be switched off immediately. Maintenance measures are only to be undertaken when the machine is at a complete standstill and by suitably qualified specialists.

After maintenance work has been carried out, the protection devices are to be refitted in the correct way.

3. Assembly of the Retractable Locating Pin

- The Retractable Locating Pin is installed by means of four head cap screws on the housing sides.
- The centering pin manufactured by the customer is secured in the piston rod receiver with a threaded pin M6x10 or a spring type straight pin.

Attention: The Retractable Locating Pin was not provided with means of adjustment. This must be taken into account when designing / manufacturing the consoles / braces.

- Create supply of compressed air between pneumatic control and Retractable Locating Pin (connections "N").

Attention: For fine adjustment of speed of positioning operation, the use of external regulating valves is recommended.

Inductive position sensing (T24. ...)

Connect sensor per electrical diagram to control line by inserting connector "C" and tightening connector coupling nut.

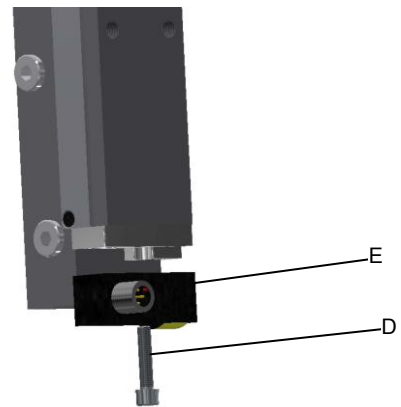
Attention: Operation with wrong current or current higher than specified may short out the system and lead to personnel injury.

Function of the integrated LEDs is as follows:

- green system current
- red cylinder up
- yellow cylinder down

4. Replacement of the sensor block

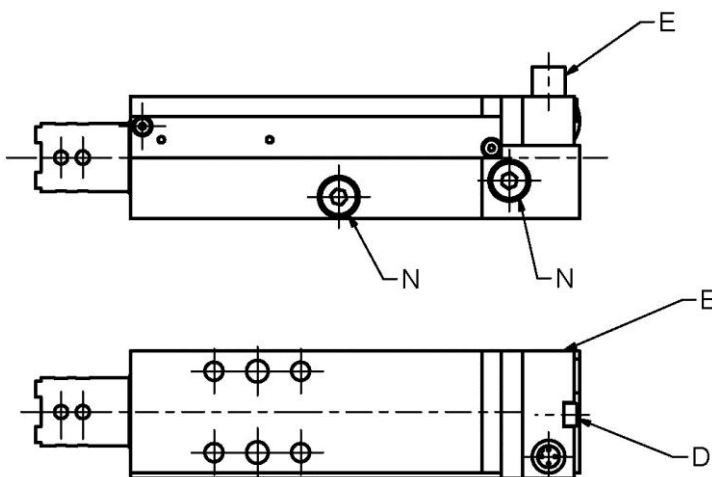
- Remove sensor block "E" by loosening screw "D".
- Replace sensor block and tighten it again with a torque of 3 Nm.

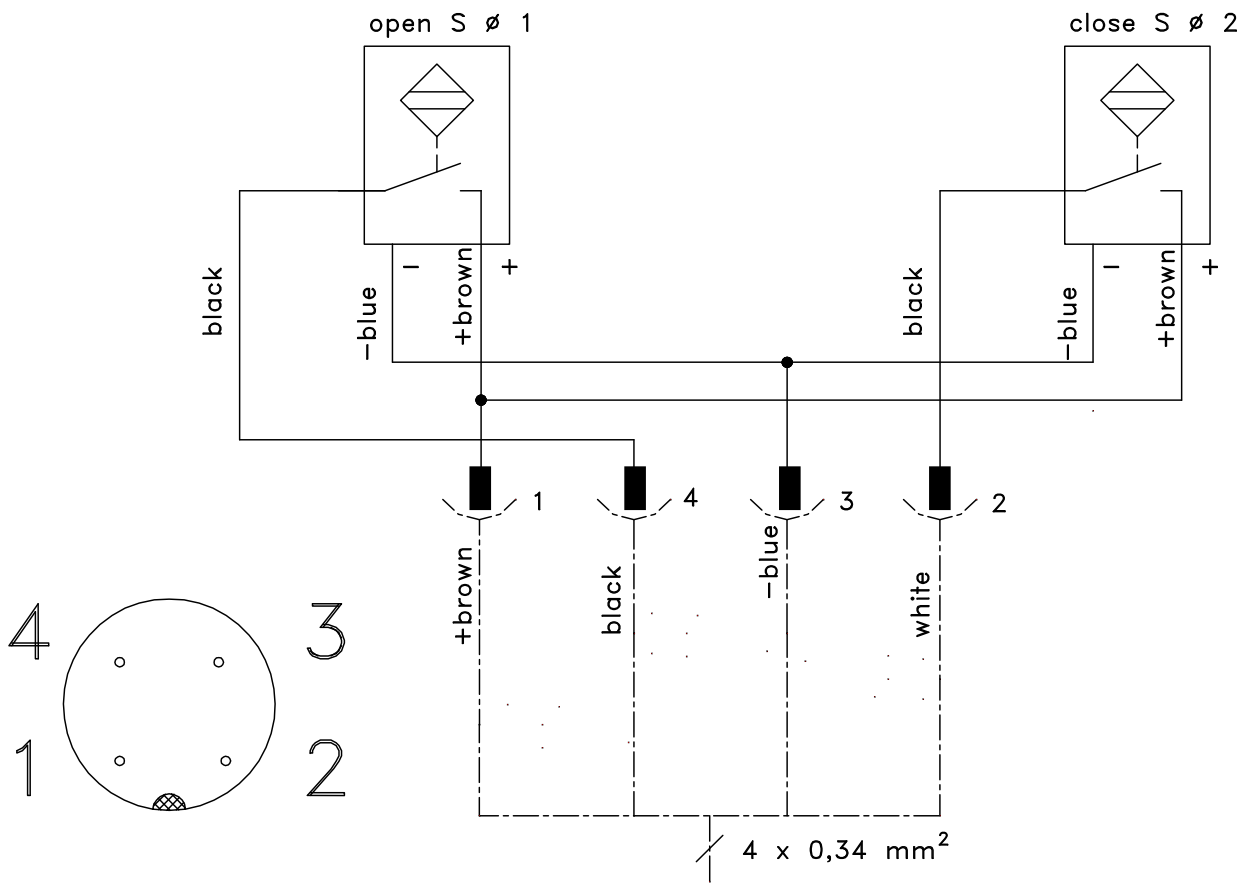
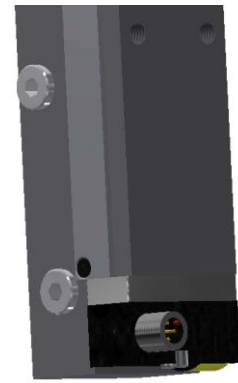


5. Maintenance

The Retractable Locating Pin is fitted with a view to application in series production with low-maintenance bearings and guides. Because of the closed structure of the Retractable Locating Pin no special maintenance is necessary.

Attention: Damage can be caused to the Retractable Locating Pin by cleaning with steam-jet or dry ice.





Technical Specifications

Inductive switch (standard version)

Short circuit proof

Rated voltage 10-30 V

Working current 32 mA (one initiator connected with PLC)

Closer PNP exit

