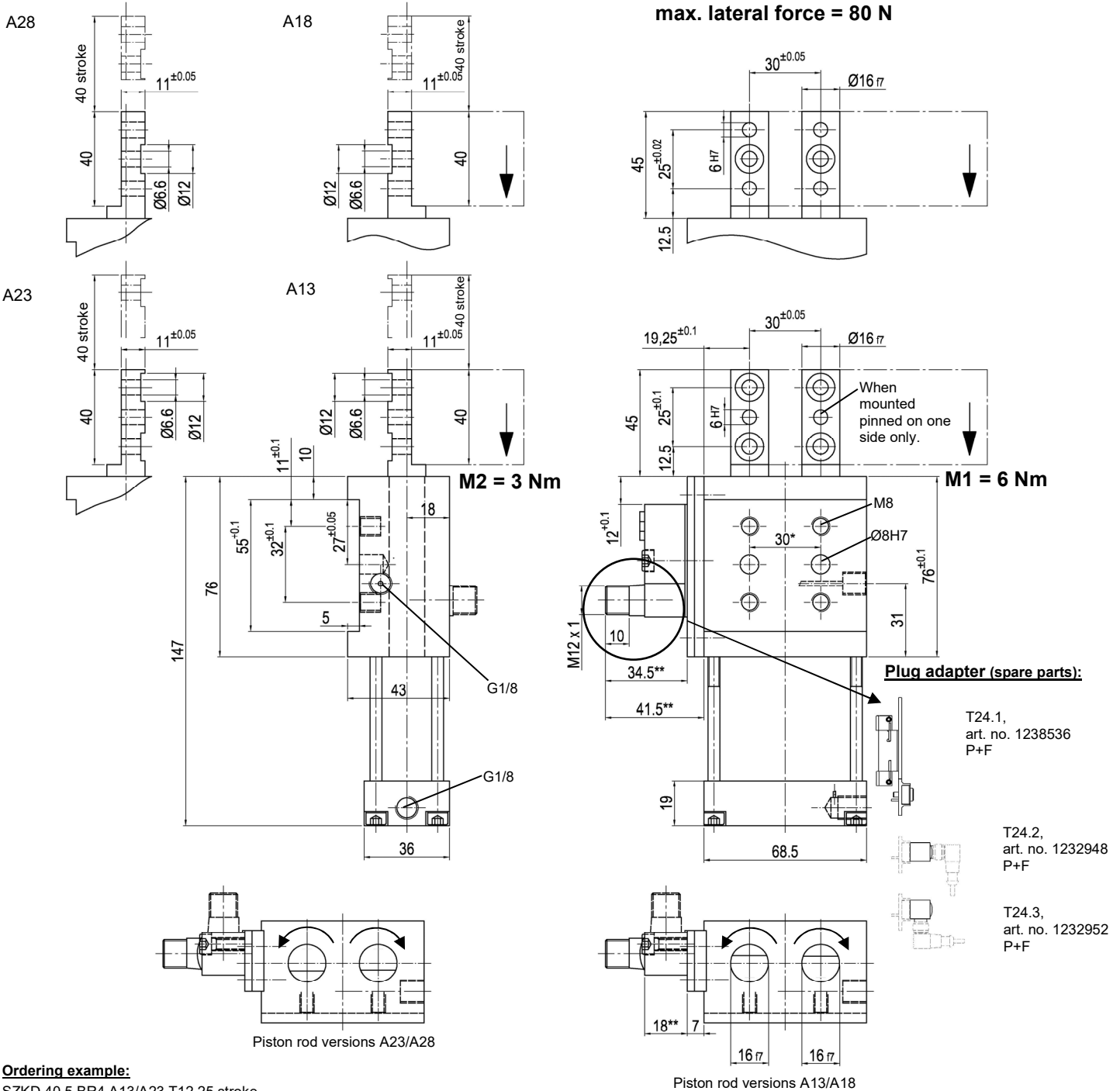


Retractable Locating Pin / Linear Unit

with double guide rods, 40 mm stroke, rotatable piston rods

SZKD 40.5 BR4



Ordering example:

SZKD 40.5 BR4 A13/A23 T12 25 stroke

SZKD... BR4: Type
 40.5: Piston Ø 40
 A13/A23: Piston rod version
 T12: Sensing system
 25: Special stroke 10 < 40 mm

Ordering codes TÜNKERS sensing systems:

...T00 Without sensing system
 ... T12 Inductive sensor 24 V, 1 output with integrated LED's
 ...T24.1 Without plug adapter
 ...T24.2 With straight plug adapter (standard)
 ...T24.3 With plug adapter 90° angle

Attention! Turn the piston rods only in retracted end position!

* Tolerance for dowel holes ± 0.02, for threaded holes ± 0.1.

** with sensing system T24.. = + 8 mm

Attention:

External throttle check valves must be provided on assembly. They are not included in the scope of delivery!

Type	Tensile force (kN)	Shear force (kN)	Operating pressure with oil-free air max. (bar)	Connection (G)	Weight ~ (kg)
SZKD 40.5	0.4	0.6	6	1/8	1.4