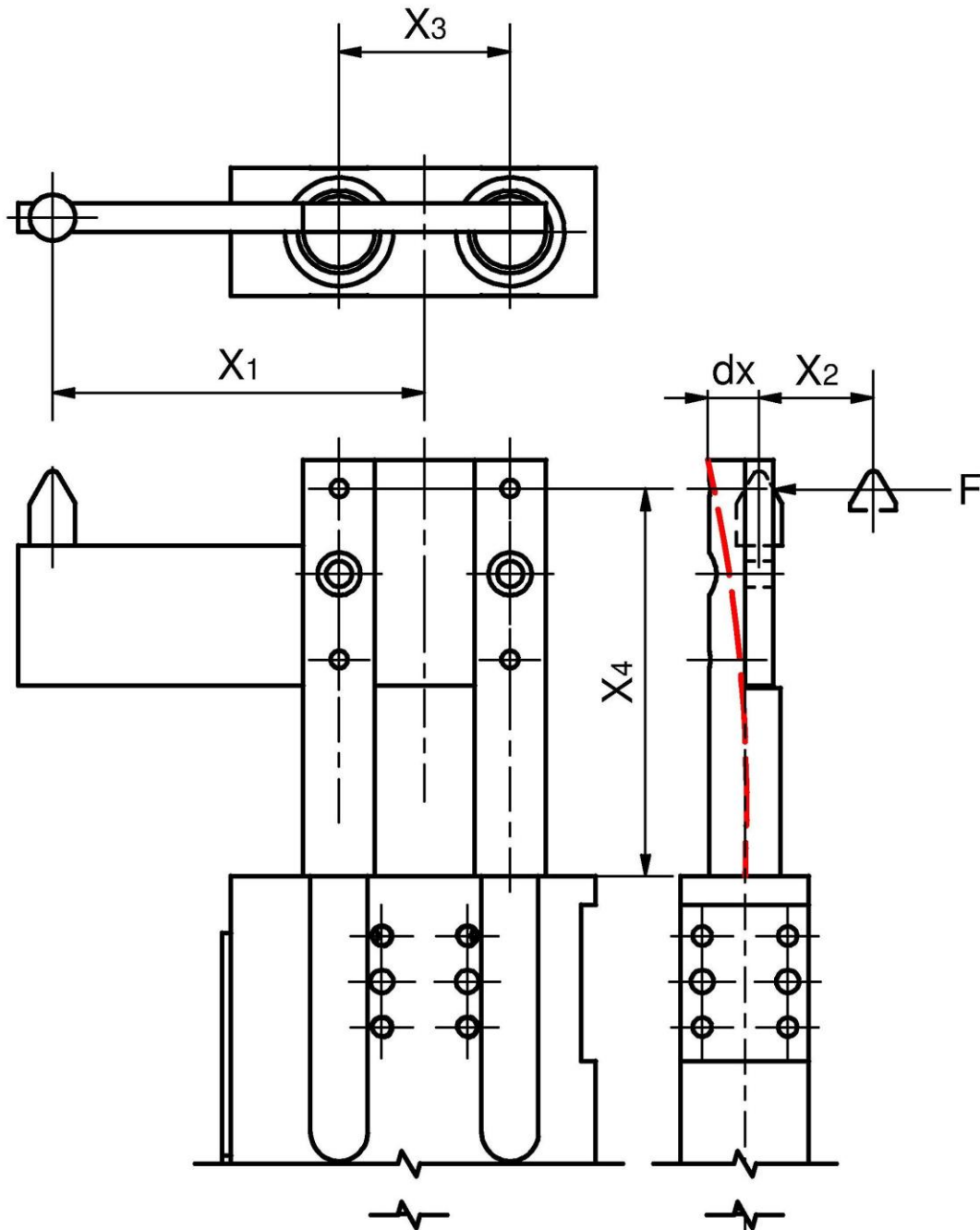


# Load

in extended position

SZKD / SZVD



Type	Force per piston rod F max*	Precision/ deflection dx*	X <sub>1</sub> offset max. (mm)	X <sub>2</sub> offset max. (mm)	X <sub>3</sub> (mm)	X <sub>4</sub> (mm)
SZKD 40/40.5	100 N	+/- 0.20 mm	60	30	30	37.5 + stroke
SZKD 63.5	200 N	+/- 0.15 mm	200	100	60	76.0 + stroke
SZVD 32	100 N	+/- 0.20 mm	100	40	62	37.5 + stroke
SZVD 50/50.1	200 N	+/- 0.15 mm	200	100	96	57.0 + stroke

\* at reach X<sub>4</sub>