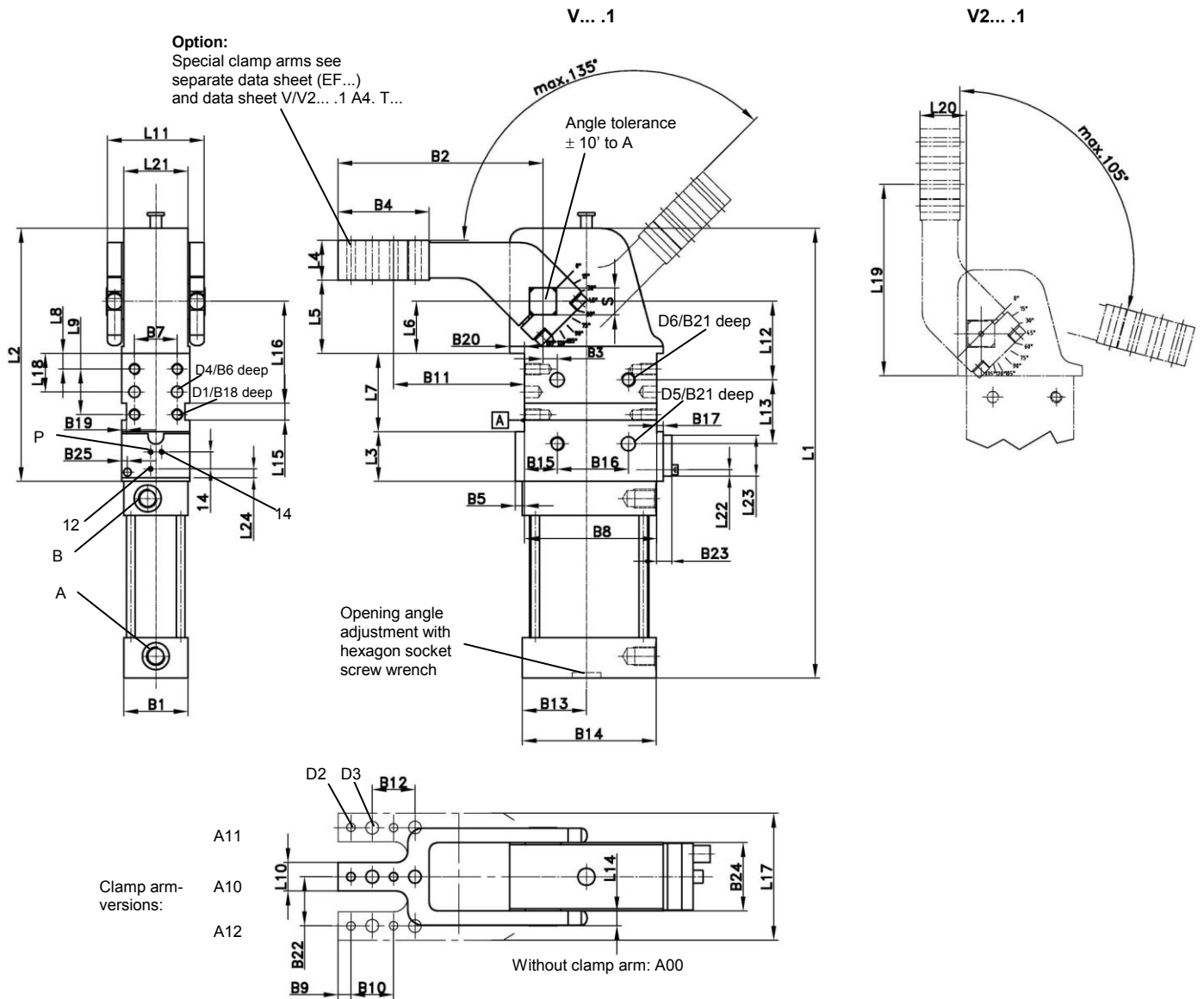


Vario Clamp

with preset opening angle

V/V2... .1 BR2 T08T (T08)



Ordering example:

V 50.1 BR2 A10 T08T 135°

V 50.1 BR2:

A10: Type
T08T: Clamp arm version
135° Sensing system
Opening angle

Opening angle:

Opening angle range from 5° to 135° (Type V... .1). Please specify opening angle when ordering!

Connections pneumatic sensing T08T:

A: clamping
B: release clamping
P: pressure connection for sensing M5
14: control system A M5
12: control system B M5

Attention! The preset opening angle may not be changed by the customer!

*Tolerance for dowel holes ± 0.02, for threaded holes ± 0.1.

Medium: Air, max. 6 bar, operation permitted with oil-free air.

Attention!

External throttle check valves must be provided on assembly. They are not included in the scope of delivery!

Ordering example Tünkers sensing systems:

... T08T: Pneumatic sensing V 50.1, V 63.1
... T08: Pneumatic sensing V 80.1

Type	Holding torque max.	Clamping moment at 5 bar	Corresponds to piston Ø (mm)	Weight ~ (kg)	B1	B2	B3 ±0,05	B4	B5	B6	B7*	B8*	B9	B10 ±0,02	B11 ±0,1	B12 ±0,2
V/V2 50.1	800 Nm	160 Nm	50	4,3	48	144	10	65	6,5	10	30	93	9	30	92	30
V/V2 63.1	1500 Nm	380 Nm	63	4,8	54	144	10	65	7,5	10	30	93	9	30	92	30
V/V2 80.1	2500 Nm	800 Nm	80	17	76	179	15	65	8	12	50	134	9	30	119	30

Type	B13	B14	B15 ±0,1	B16*	B17	B18	B19	B20	B21	B22 ±0,1	B23	B24	B25	D1	D2 H7	D3	D4 H7	D5 H7	D6	L1	L2	L3	L4 ±0,1
V/V2 50.1	47	94	23	50	4,5	11	3,5	10,5	12	34	10	48	5,5	M8	6	9	8	10	M10	321	178	35	28
V/V2 63.1	54	106	23	50	7,5	11	3,5	12	12	37	10	54	7	M8	6	9	8	10	M10	361	211	61	28
V/V2 80.1	70	140	36	70	8	15	3,5	20	13	50,5	30	76	7	M10	6	9	8	12	M12	488	270	55	35

Type	L5 ±0,2	L6 ±0,05	L7 ±0,1	L8 ±0,1	L9 ±0,1	L10	L11	L12 ±0,05	L13*	L14 ±0,1	L15 N9	L16 ±0,05	L17	L18 ±0,05	L19 ±0,1	L20 ±0,2	L21	L22	L23	L24	S h9
V/V2 50.1	51,5	36,5	55	11	32	20	69	55	45	10	12	71,5	88	27	141,5	30	45	5	34	3	19
V/V2 63.1	51,5	36,5	55	11	32	20	79	55	45	10	12	71,5	94	27	141,5	30	52	7,5	58	10	22
V/V2 80.1	70	50	80	15	50	25	109	65	75	12,5	12	96,5	126	40	190	34	74	7,5	52	10	30