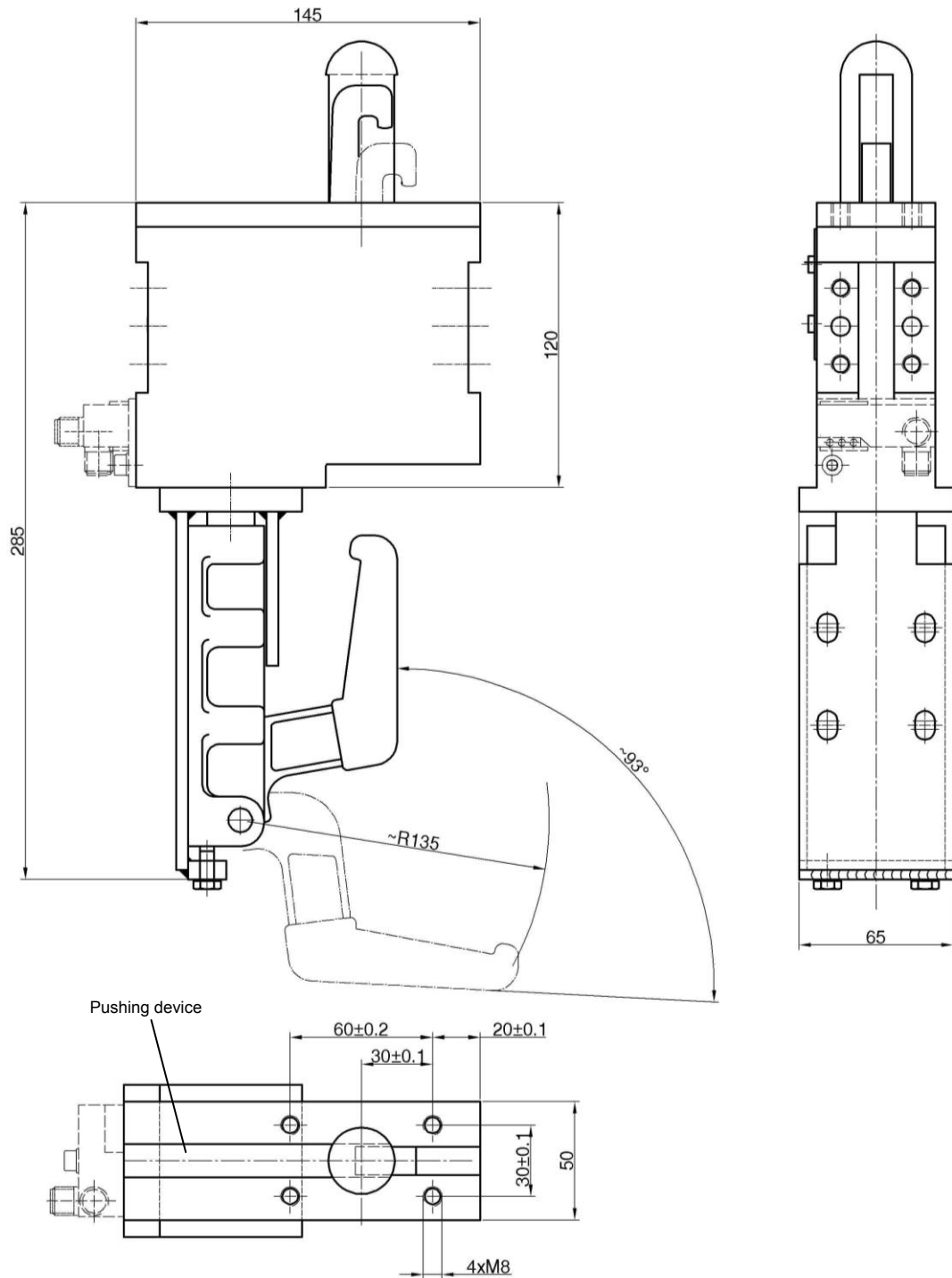


Underbody Clamp

With locating pin, manually operated, toggle locked,
for pin \varnothing 20-40 mm, with moving device to protect the mechanism

MK 60.1 UZ



Ordering example:

MK 60.1 UZ T12 A 30
MK 60.1 UZ T12 B 30/22

MK 60.1 UZ:	Type
T12:	Sensing system
B:	Locating pin form
30/22	Pin measurement

Ordering example Tünkers sensing system:

...T00	Without sensing
--------	-----------------

For further technical information see data sheet „K... .1 UZ“.

Optional:

...T12	Inductive sensor 24 V, 1 output with integrated LEDs
--------	--