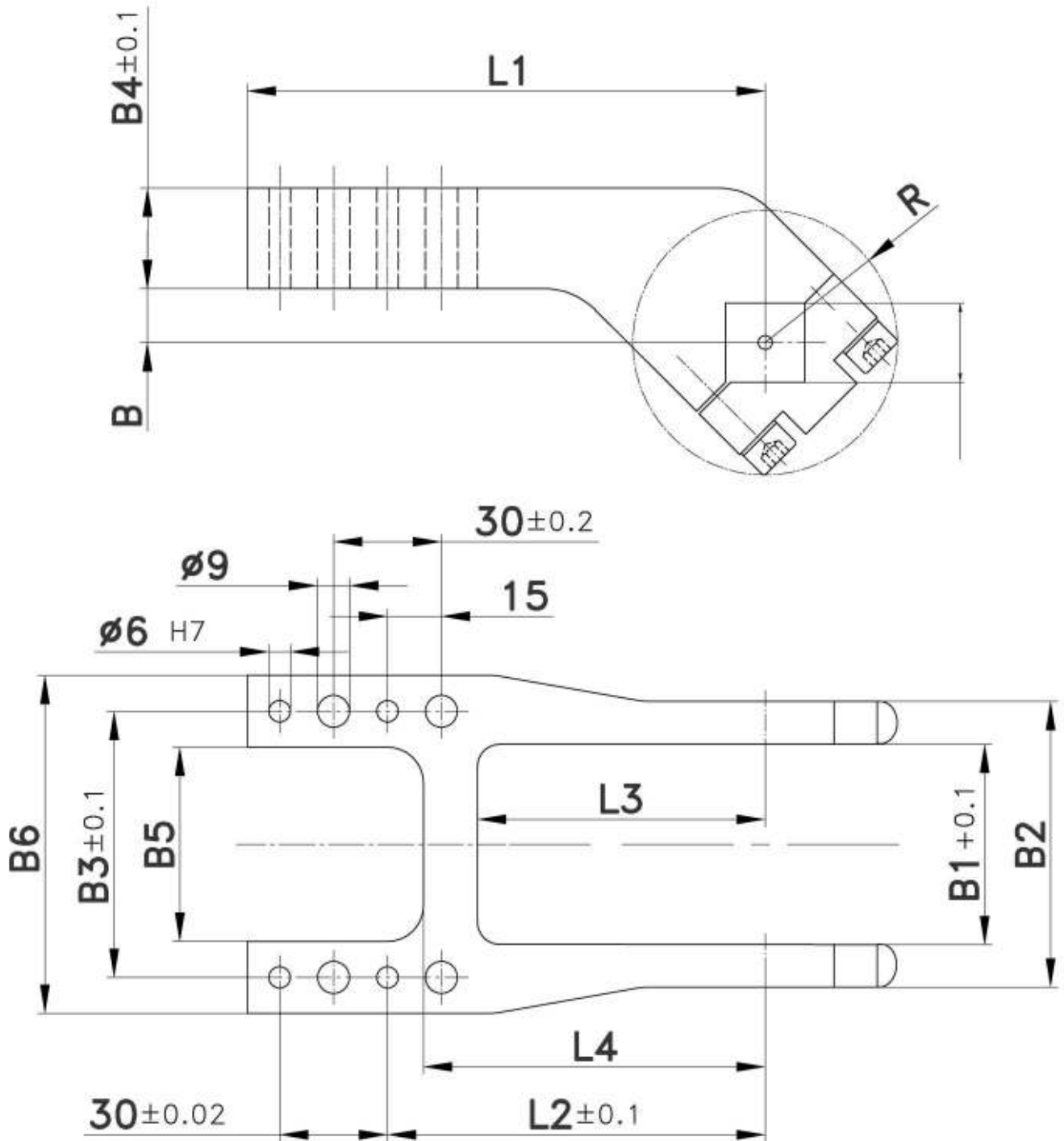


# Clamp arm

for Clamps size 50/63 with an offset of 15 mm

A16



**Ordering example clamp arm complete:**  
216903: Clamp arm complete A16 size 50

**Ordering example for a complete clamp:**  
V 50.1 BR2 A16 T12

V 50.1 BR2: Type  
A16: Clamp arm version  
T12: Sensing system

Clamp size	Clamp arm version A16 order no.	Weight ~ (kg)	B	B1	B2	B3	B4	B5	B6	L1	L2 ±0,1	L3	L4	R
50	216903	1,38	15	48	68	77	28	57	97	144	105	80	95	31
63	220872	1,48	15	54	78	74	28	54	94	144	105	82	95	37