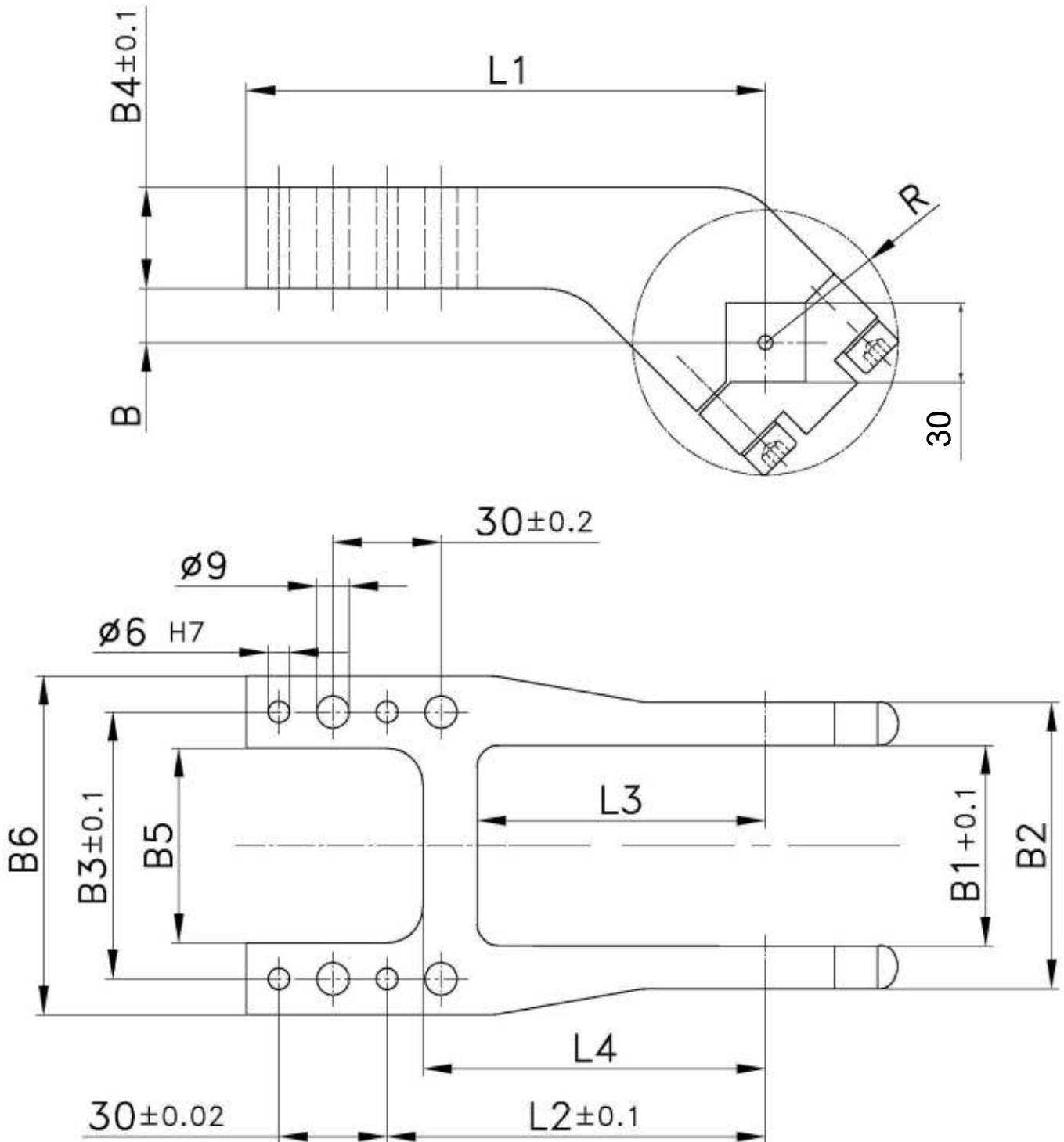


Clamp arm

for Clamps size 80, with an offset of 20 mm

A16



Ordering code clamp arm complete:

238863: Clamp arm complete A16 size 80

Ordering example for a complete clamp:

V 80.1 BR2 A16 T12

V 80.1 BR2: Type
 A16: Clamp arm version
 T12: Sensing system

Clamp size	Clamp arm version A16 order no.	Weight ~ (kg)	B	B1	B2	B3	B4	B5	B6	L1	L2 ±0,1	L3	L4	R
80	238863	3,05	20	76	108	99	35	74	124	179	140	115	135	51