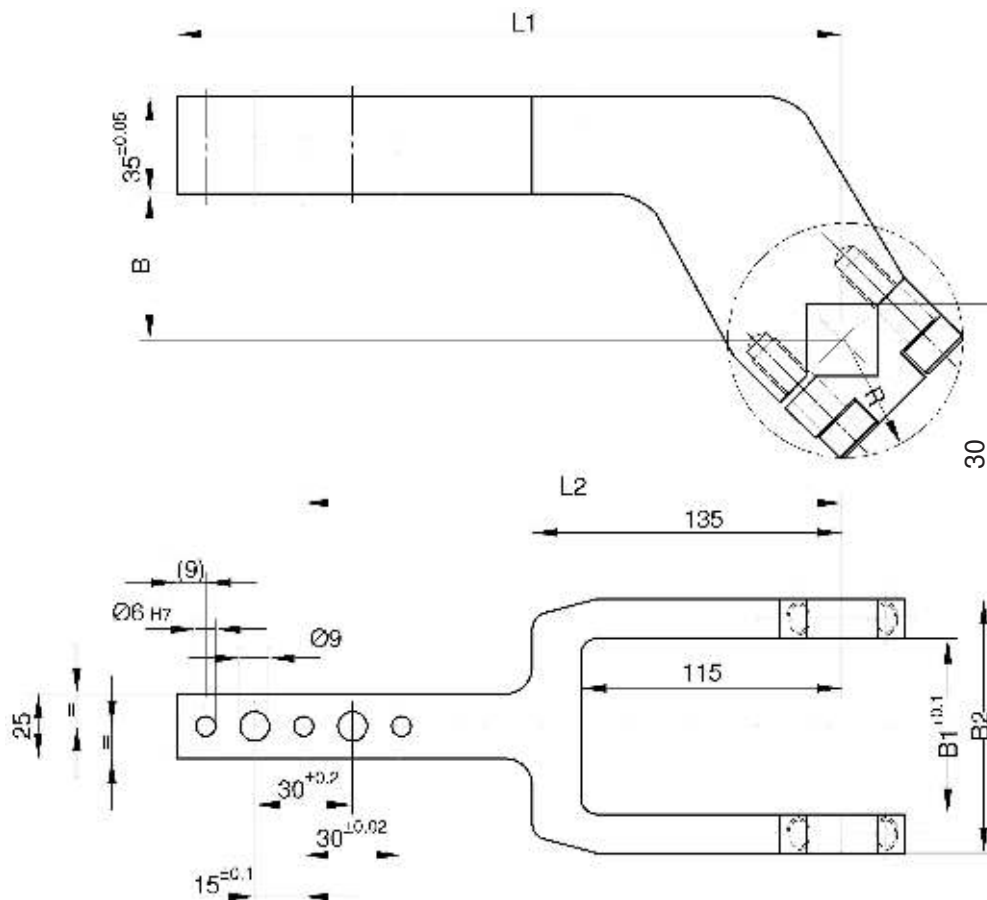


Wishbone Clamp Arm

Version for KU 80, V 80.1

EF...



UFS - CODE (Ford)	ID - Nr.	"L1"	"L2" ±0,05	"B"	"B1"	"B2"	
010-2701	261000	204	165	45	76	108	KU 80 ; VU 80.1 R = 51
010-2702	261001	264	225	45			
010-2703	261002	324	285	45			
010-2704	261003	204	165	75			
010-2705	261004	264	225	75			
010-2706	261005	324	285	75			
010-2707	261006	204	165	105			
010-2708	261007	264	225	105			
010-2709	261008	324	285	105			

Ordering example clamp arm:

EF 204/45/80

EF: Clamp arm type
 204: „L1“
 45: „B“
 80: Piston Ø

Ordering example complete clamp:

VU 80.1 EF 204/45/80 T12 45°-135°

VU 80.1: Type
 EF 204/45/80: Clamp arm type
 T12: Sensing system
 45°-135°: Opening angle

*Tolerance for dowel holes ± 0,02, for threaded holes ± 0,1.