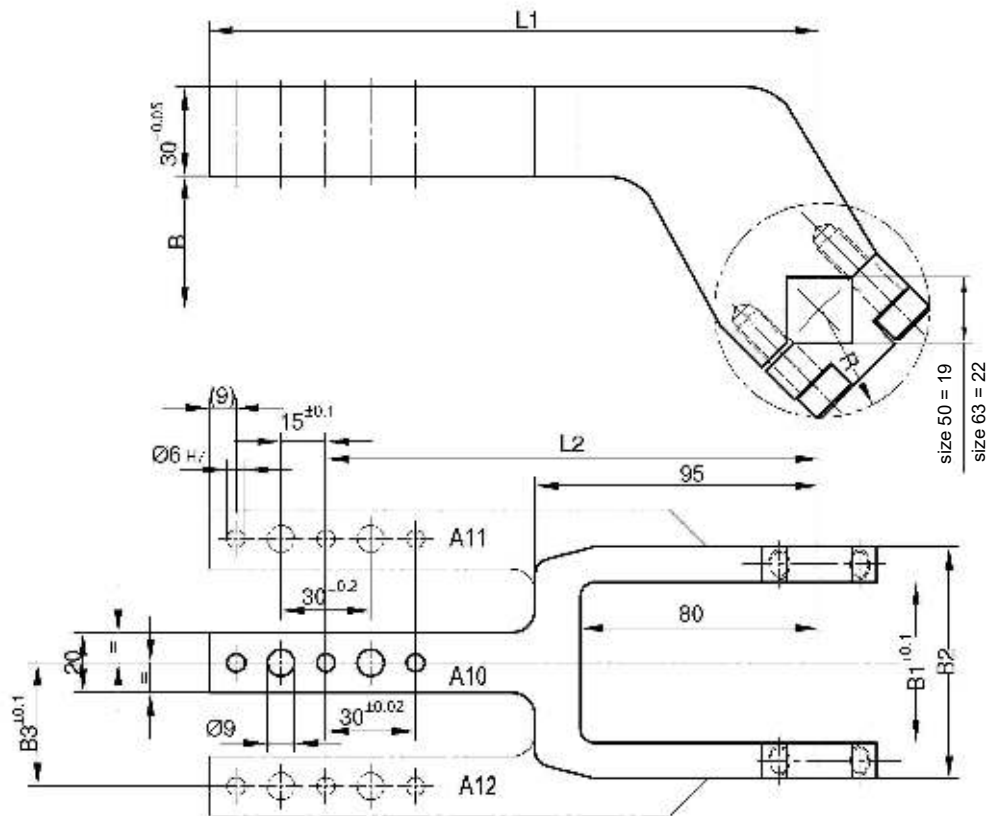


# Forked Clamp Arm

Version for K..., KU..., and V...series

EF...



Order no.			Description	UFS-Code (Ford)	"L1"	"L2" ±0,05	"B"	"B1"	"B2"	"B3"	
A10	A11	A12									
234309	234306	234310	EF 144/15/50	010-2323	144	105	15	48	68	34	K ; KU ; V 50 R = 33
236367	238198	238549	EF 204/15/50	010-2326	204	165	15				
228883	234311	234308	EF 144/45/50	010-2321	144	105	45				
228884	238129	238128	EF 204/45/50	010-2322	204	165	45				
228885	234307	234312	EF 144/75/50	010-2324	144	105	75				
228891	238550	238551	EF 204/75/50	010-2325	204	165	75				
236369	238552	238553	EF 144/15/63	010-2311	144	105	15	54	78	37	K ; KU ; V 63 R = 36
236370	238554	238555	EF 204/15/63	010-2312	204	165	15				
228774	234314	234313	EF 144/45/63	010-2301	144	105	45				
228775	238133	238132	EF 204/45/63	010-2302	204	165	45				
228513	234316	234315	EF 144/75/63	010-2304	144	105	75				
228771	238282	238283	EF 204/75/63	010-2305	204	165	75				

**Ordering example for clamp arm complete (including flange and screws):**

234309: Clamp arm complete A10 EF 144/15/50

**Ordering example for a complete clamp:**

V 50.1 BR2 EF A11 144/45/50 T12

V 50.1 BR2:

EF A11:

144/45/50:

T12:

Clamp type  
Clamp arm version  
Clamp arm description  
Sensing system

Clamp arm with L1 = 144 is supplied with only 2 pin holes (Ø6H7) and 2 through holes (Ø9).

\*Tolerance für dowel holes ± 0.02, for threaded holes ± 0.1.

Medium: Air, max. 6 bar, operation permitted with oil-free air.