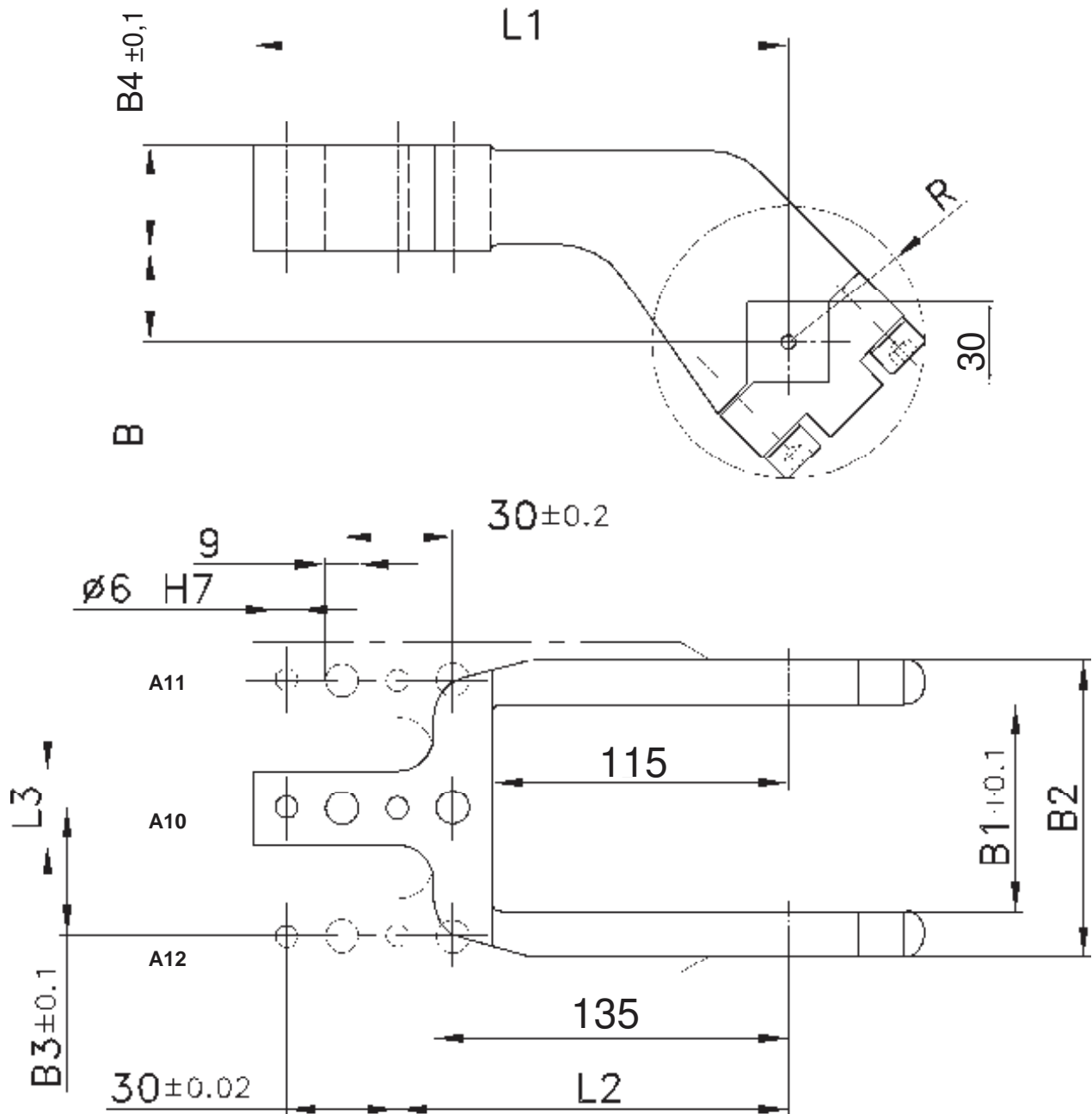


Clamp arms

for Clamps size 80 with an offset of 20 mm

A10, 11, 12



Ordering example clamp arm complete:
227660: Clamp arm complete A10 size 80

Ordering example for a complete clamp:
V 80.1 A10 T12

V 80.1: Type
A10: Clamp arm version
T12: Sensing system

Clamp size	Clamp arm version A10 order no.	Clamp arm version A11 order no.	Clamp arm version A12 order no.	Weight ~ (kg)	B	B1	B2	B3	B4	L1	L2 $\pm 0,1$	L3	R
80	227660	227661	230858	2,0	20	76	108	50,5	35	179	140	25	51