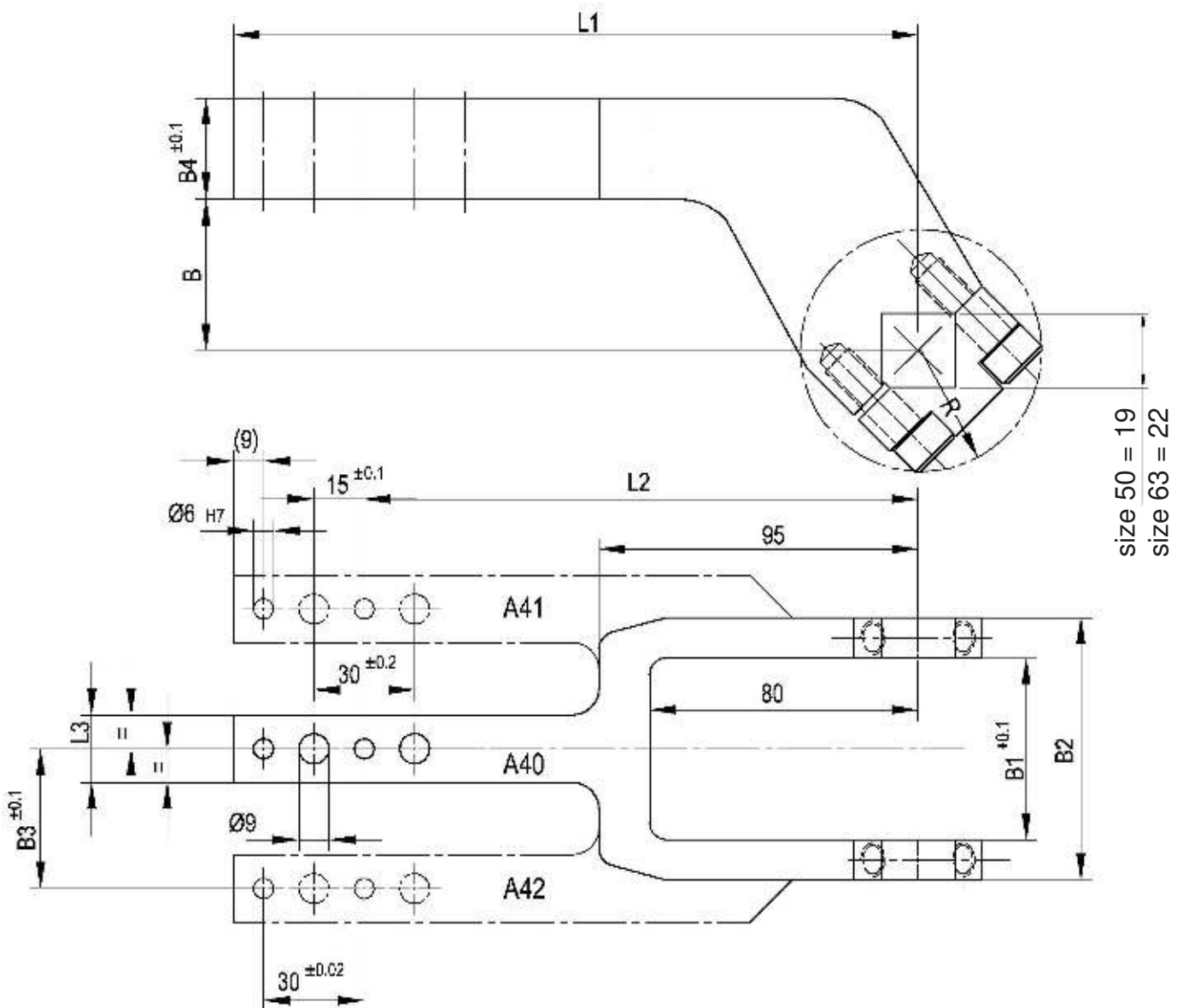


Clamp arms

for Clamps size 50/63 with an offset of 45 mm

A40, 41, 42



Ordering example clamp arm complete:

245848: Clamp arm complete A41 size 63

Ordering example for a complete clamp:

V 50.1 BR2 A40 T12

V 50.1 BR2: Type
 A40: Clamp arm version
 T12: Sensing system

Clamp size	Clamp arm version A40 order no.	Clamp arm version A41 order no.	Clamp arm version A42 order no.	Weight ~ (kg)	B	B1	B2	B3	B4	L1	L2 ±0.1	L3	R
50	242838	245811	245812	1.1	45	48	68	34	28	144	105	20	33
63	242839	245848	245849	1.2	45	54	78	37	28	144	105	20	36