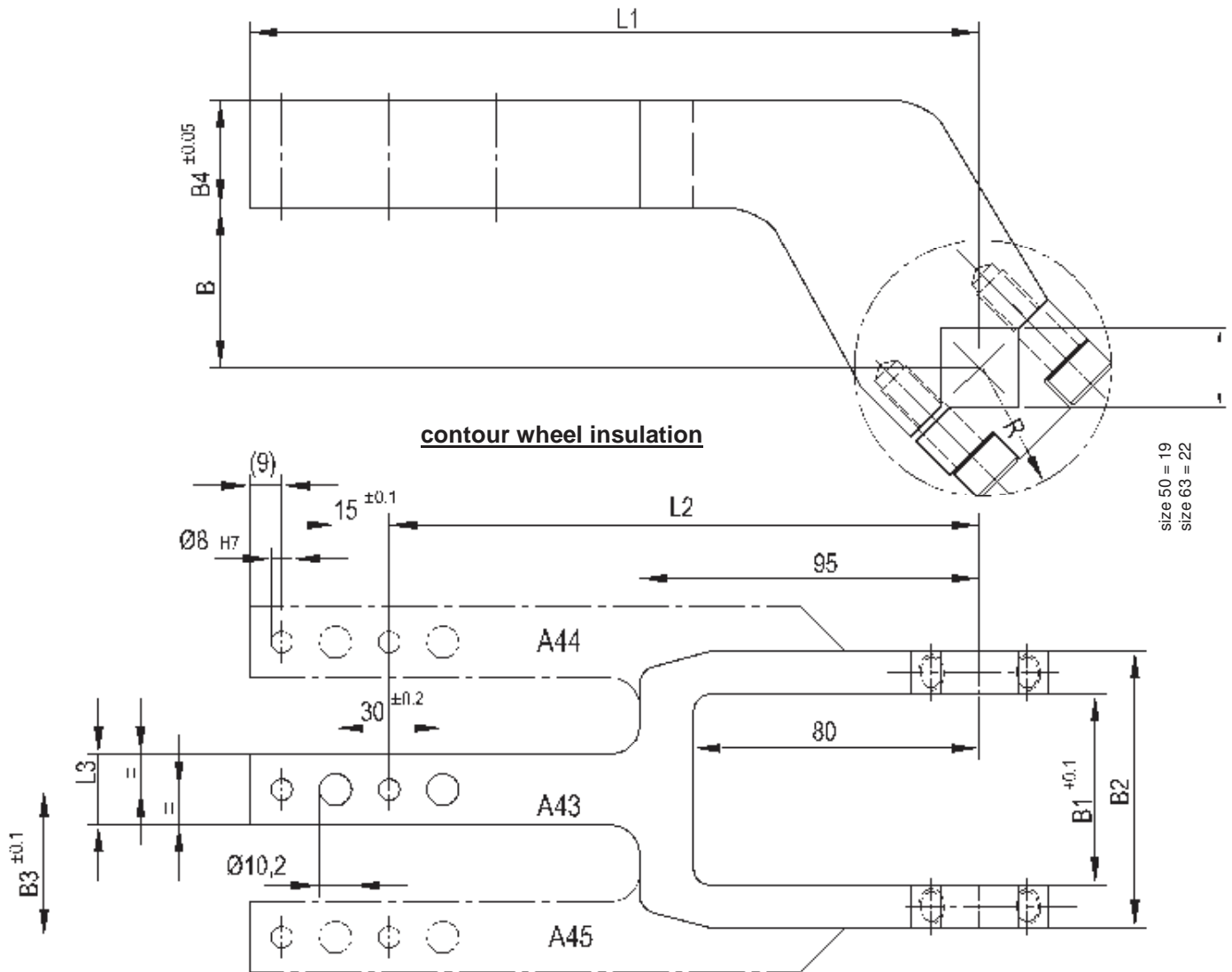


Clamp arms

for Clamps size 50/63 with an offset of 45 mm

A43, 44, 45



Ordering example clamp arm complete:

234563: Clamp arm complete A43 size 50

Ordering example for a complete clamp:

V 50.1 A43 T12

V 50.1: Type
 A43: Clamp arm version
 T12: Sensing system

Clamp size	Clamp arm version A43 order no.	Clamp arm version A44 order no.	Clamp arm version A45 order no.	B	B1 ±0,1	B2 ±0,02	B3 ±0,2	B4	L1 ±0,1	L2	L3	L4 +0,1	L5 +0,1	R
50	234563	234569	234570	45	48	68	34	28	144	105	20	48	68	33
63	234571	234572	234573	45	54	78	37	28	144	105	20	54	78	36