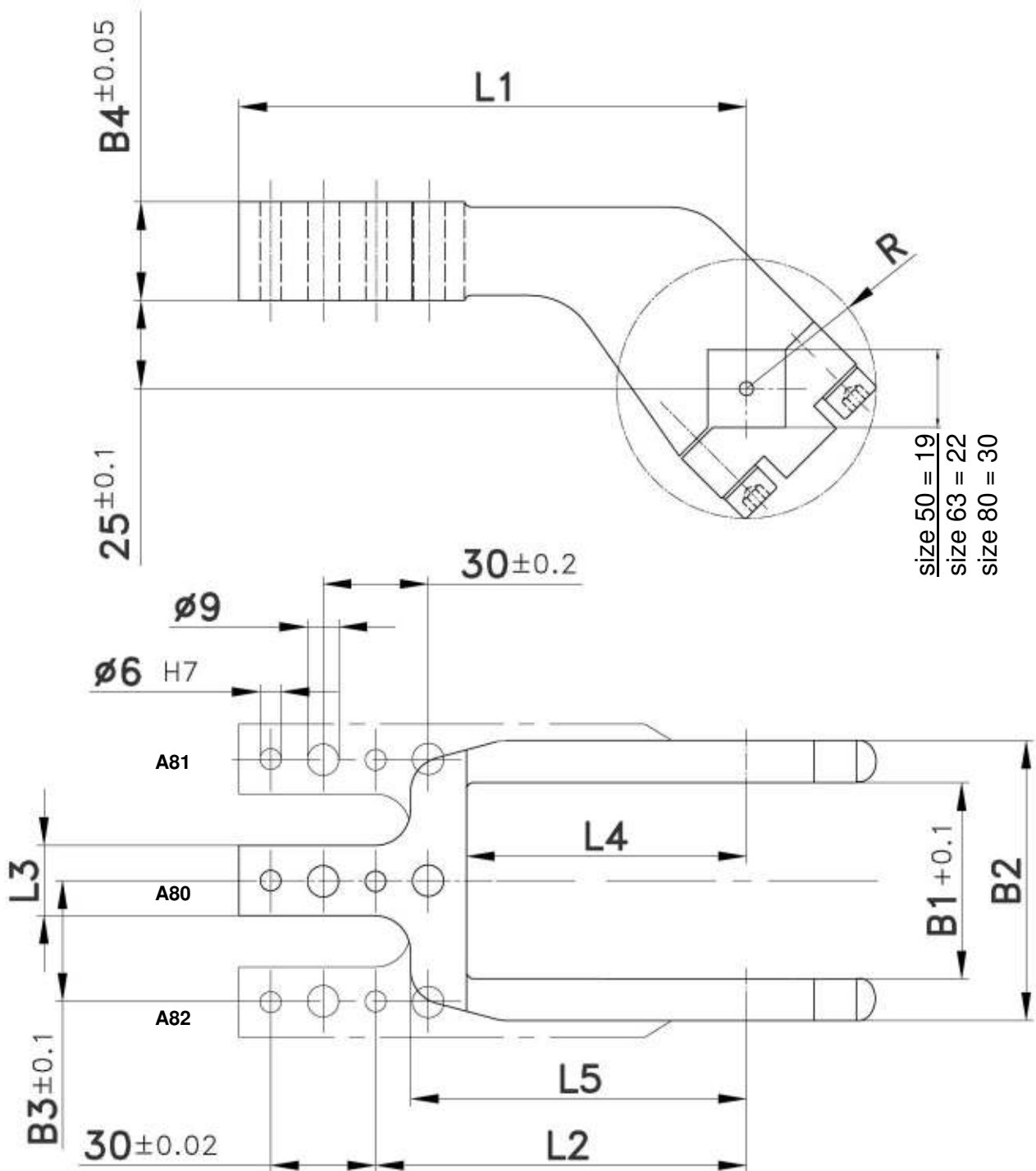


# Clamp arms

for Clamps size 50, 63, 80 with an offset of 25 mm

## A80, 81, 82



**Ordering example clamp arm complete:**

278309: Clamp arm complete A80 size 63

**Ordering example for a complete clamp:**

V 63.1 BR2 A80 T12

V 63.1 BR2:

Type  
A80: Clamp arm version  
T12: Sensing system

Clamp size	Clamp arm version A80 order no.	Clamp arm version A81 order no.	Clamp arm version A82 order no.	Weight ~ (kg)	B1	B2	B3	B4	L1 ±0,1	L2 ±0,1	L3	L4	L5	R
50	278956	279431	279432	1.1	48	68	34	28	144	105	20	80	95	33
63	278309	279433	279434	1.3	54	78	37	28	144	105	20	80	95	36
80	361386	361388	361390	2.7	76	108	50.5	35	179	140	25	115	135	51