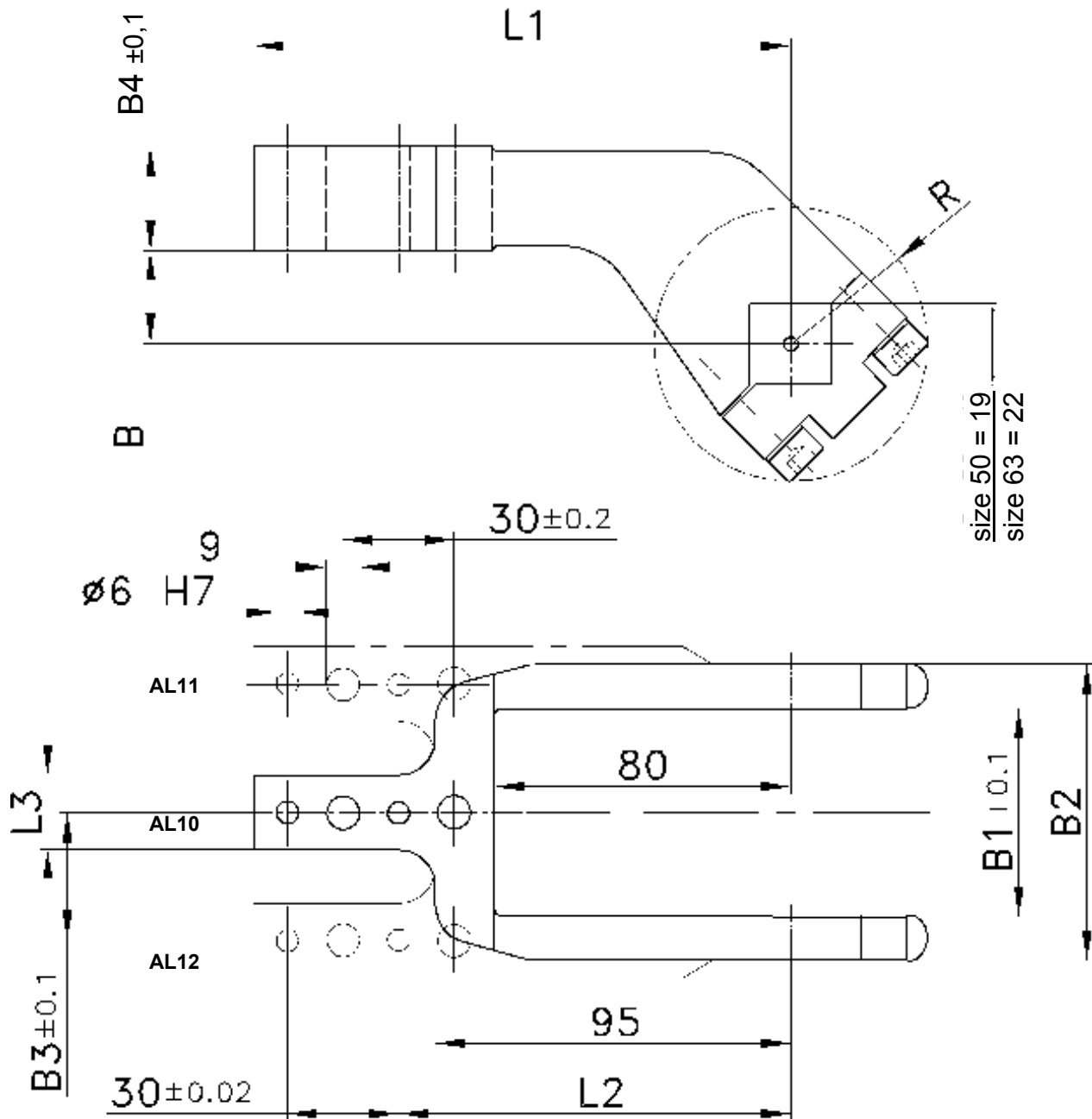


Clamp arm

aluminum version
for Clamps size 50/63 with an offset of 15 mm

AL10, 11, 12



Ordering example clamp arm complete:

249487: Clamp arm complete AL10 size 50

Ordering example for a complete clamp:

V 50.1 BR3 AL10 T12

V 50.1 BR3: Type
AL10: Clamp arm version
T12: Sensing system

Clamp size	Clamp arm version AL10 order no.	Clamp arm version AL11 (LW2... AL12) order no.	Clamp arm version AL12 (LW2... AL11) order no.	Material	Weight ~ (kg)	B	B1	B2	B3	B4	L1	L2 ±0.1	L3	R
50	249487	354181	354182	Al	0.42	15	48	68	34	28	144	105	20	33
63	249484	368396	368399	Al	0.44	15	54	78	37	28	144	105	20	36